

## Star Border

10 inches by 12 inches finished  
10 ½ inches by 12 ½ inches edge to edge



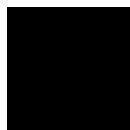
Some simple blocks make very effective borders! These small stars are very effective, either as a complete border, or in groups around your quilt. Pull some colours from the quilt and create these stars.

For the guild block, pull some light orange or yellow colours from the paisley print, and put the stars on a solid black background. It will make some very stunning blocks!

Focus Fabric:

Cut one 6 ½ by 12 ½ inch rectangle

Black Background:



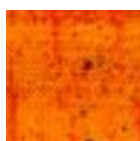
12 - 1 ½ inch squares

12 - 1 ½ inch squares for connector corners

6 - 1 7/8 inch squares for half square triangles OR

12 half square triangles cut from 1 ½ inch strip with Half Square or Easy Angle Ruler

Orange/Yellow #1:



12 - 2 ½ by 1 ½ inch rectangles

Orange/Yellow #2:



6 - 1 7/8 inch squares for half square triangles OR

12 half square triangles cut from 1 ½ inch strip with Half Square or Easy Angle Ruler

Apply the background connector corners to the Orange/Yellow #1 rectangles:



Sew orange/yellow #2 and background half squares. These should measure 1 1/2 inch square.



Sew the Half square block to the plain background, then add the rectangle. Watch where your points are.



Join 4 sections to make the each star!

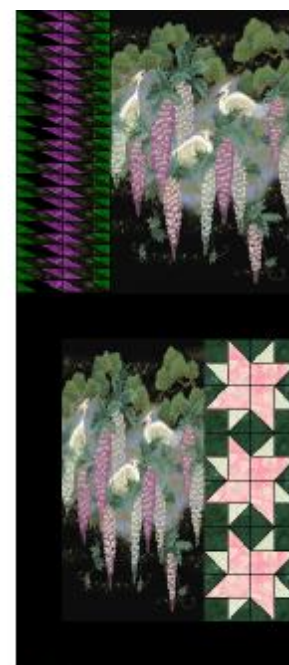


The finished star should be 4 1/2 inches edge to edge.

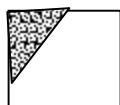
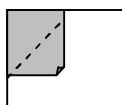
Sew the three stars together, and add them to the right side of the feature fabric.

For your own quilt -

Add 2 1/2 inch sashing strips to the bottom, then left side, then the top of your block. Sew this block to the bottom of the Seminole block from last month.

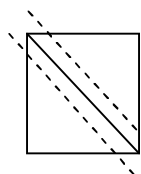


### Connector Corners:



*Draw a line kitty corner across the back of your small connector square. Place this on the appropriate corner of your larger piece, right sides together. Make sure that the line that you drew is in the correct position. Now, sew along that line.*

### Half Square Triangles:



*Use two different fabrics to make two 1/2 square triangles.*

*On the back of the lighter of your two fabrics, draw a line kitty corner. Layer your two squares right sides together and sew 1/4 inch on either side of the line. Cut along the line, press the seam towards the dark side. If you aren't using the half square to make quarter square blocks, square up to the correct size*