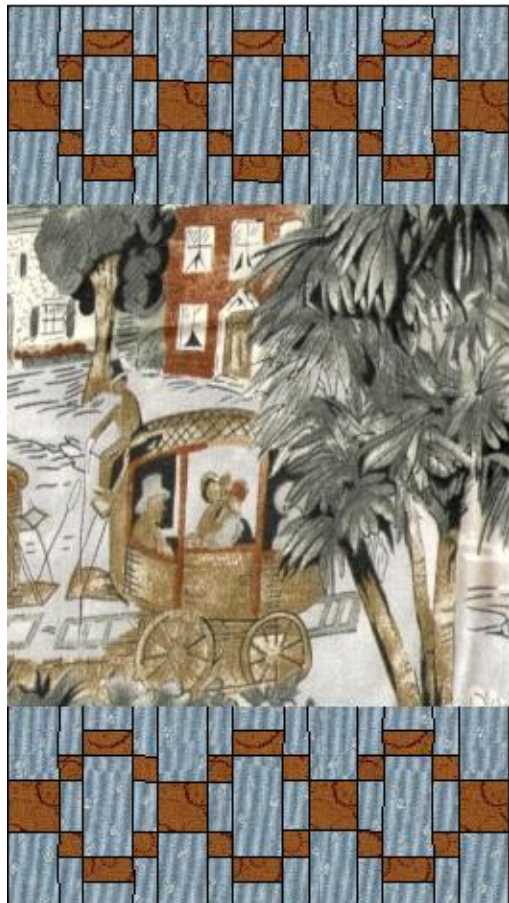


## Chains

10 inches by 18 inches finished

10 ½ inches by 18 ½ inches edge to edge

Here is a border made with strata again. This time cross cut and alternated to form a chain across the top and bottom of our feature fabric.



You only need two fabrics for this border, choose a light blue-green tone for the background, and pick up on a rich ochre brown for the chain. The toile that we are using shouldn't be overwhelmed by the border.

Focus Fabric:

Cut one 10 ½ by 10 ½ inch rectangle

From the background fabric, cut your strips

3 - 2 ½ by 14 inches

2 - 2 by 14 inches

3 - 1 ½ by 14 inches

From the chain fabric, cut your strips:

1 - 1 ½ by 14 inches

4 - 1 by 14 inches

These lengths of strips will give you a little extra when cross cutting.

Sew the following strata:

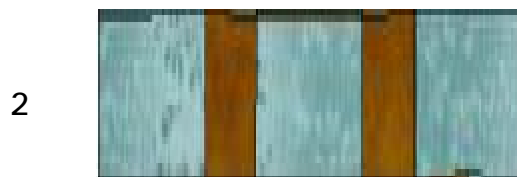


1

2 ½ inch strip of background | Cross Cut into 1 ½ inch sections

1 ½ inch strip of chain |

2 ½ inch strip of background | You will need 8 sections



2

2 inch strip of background, | Cross cut into 1 inch sections

1 inch strip of chain |

1 ½ inch strip of background |

1 inch strip of chain | You will need 12 sections.

2 inch strip of background |



3

1 ½ inch strip of background | Cross cut into 1 ½ inch sections.

1 inch strip of chain |

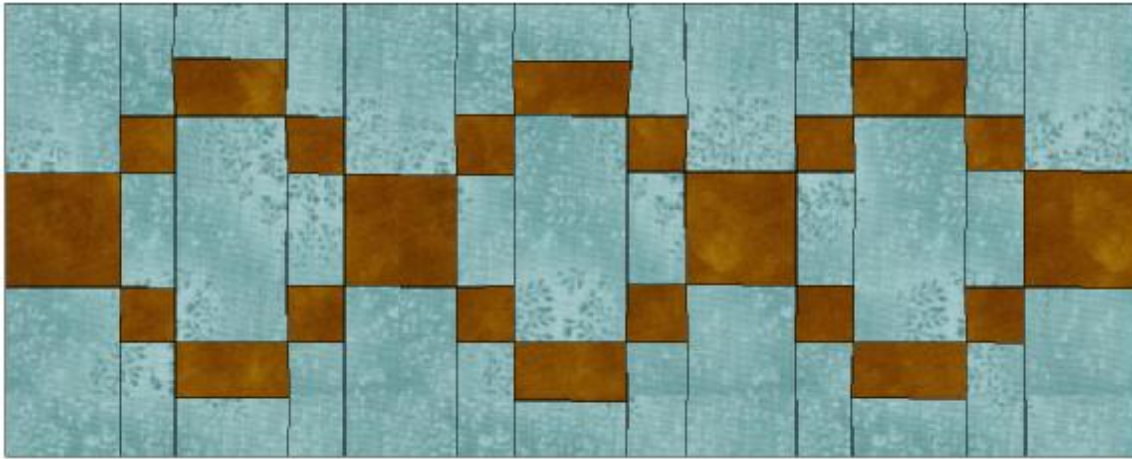
2 ½ inch strip of background |

1 inch strip of chain | You will need 6 sections

1 ½ inch strip of background |

Now arrange your cut sections in the following order

1 2 3 2 1 2 3 2 1 2 3 2 1



Make 2 borders and attach to the top and bottom of your feature fabric.

If you are making the quilt for yourself, add a 2 ½ inch border to the left side, and a 4 ½ inch border to the bottom of the square.

