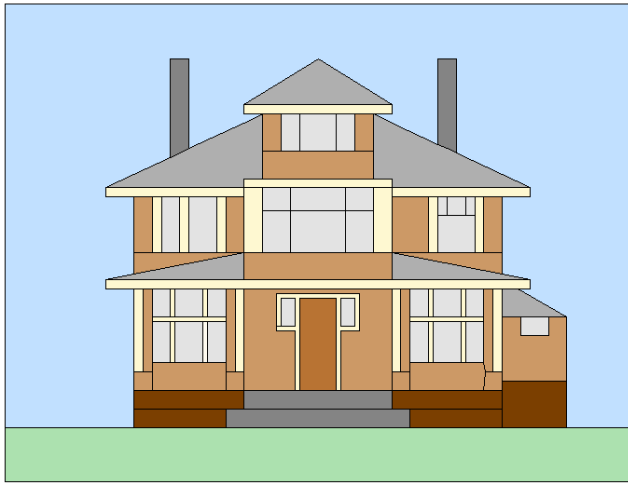


House #3

12 by 16 inches finished
 12 ½ by 16 ½ inches unfinished



As you can see this house is brand new, but built to fit in with the neighbourhood. This one has no landscaping, so go at it to your heart's content!

There is very little paper piecing in the one, just the roof angles. The Chimneys are appliqueed.

If you check out the picture below you will notice the railing on the front porches. I have not drawn them in on the pictures. You can draw them, embroider them, paint them or find a piece of striped fabric that works well.



Sky

- 1 - 17 by 2 inches (A)
- 2 - 7 by 1 ¾ inches (B)
- 2 - 4 by 2 ¼ inches (C)
- 1 - 4 by 4 ½ inches (D)
- 1 - 2 ¼ by 3 ½ inches (E)
- Plus pieces for paper pieced sections

Roof - Paper pieced

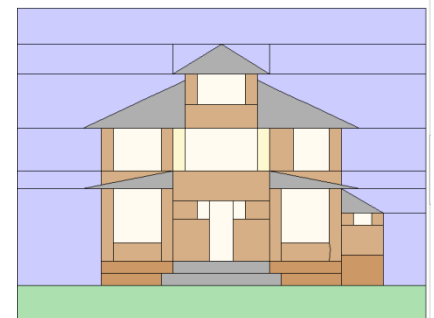
- Trim - see instructions
- 2 - 1 by 2 ¼ inch (F)

Siding

- 1 - 3 ½ by 1 ½ inches (G)
- 2 - 1 by 1 ¾ inch (H)
- 3 - 1 by 2 ¼ inch (I)
- 1 - 1 ½ by 2 ¼ inch (J)
- 4 - 1 by 3 ½ inch (K)
- 1 - 4 ½ by 1 ¾ inch (L)
- 2 - 1 ½ by 1 ¼ inch (M)
- 2 - 2 by 2 ¼ inches (N)
- 2 - 2 ½ by 1 ½ inches (P)
- 2 - 1 by 1 inches (Q)
- 1 - 2 ¼ by 1 ¾ inches (R)

Windows (see instructions before cutting)

- 1 - 2 ½ by 1 ¾ inches (S)
- 1 - 2 ½ by 2 ¼ inches (T)
- 1 - 3 ½ by 2 ¼ inches (U)
- 1 - 2 by 2 ¼ inches (V)
- 2 - 2 ½ by 2 ½ inches (W)
- 2 - 1 by 1 ¼ inch (X)
- 1 - 1 ¼ by 1 inches (Y)



Door - 1 ½ by 3 inches (Z)

Stairs

- 1 - 4 ½ by 1 inches (AA)
- 1 - 5 ½ by 1 inches (BB)

Chimney

- 2 - 1 by 4 ½ inches (for applique)

House Base

- 2 - 3 ½ by 1 inches (CC)
- 2 - 3 by 1 inches (DD)
- 1 - 2 ¼ by 1 ¾ inches (EE)

Front Yard

- 17 inches by 2 inches (FF)

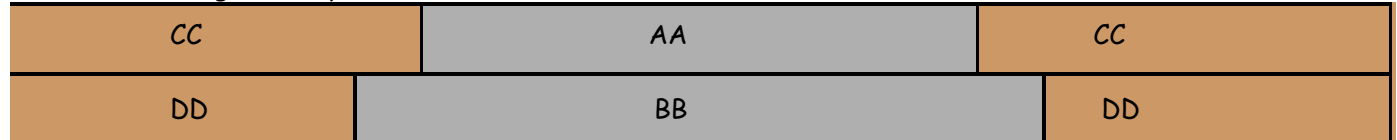
First paper piecing the roof pieces Sections A - F.

Windows - if you are going to add sashing to the windows, I suggest that you make the windows a bit larger and add the sashing before trimming the window to size and inserting it. The sashing on the outside of the windows is added after windows are stitched into the strip.

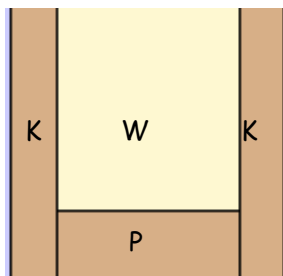
Trim - the trim is $\frac{1}{4}$ inch wide finished. You may want to add the vertical sections after you finish each floor. The horizontal trim sits under the seams of the pieced sky/roof - see the picture above.

Let's build the house from the ground up!

Start with sewing the steps into the base.

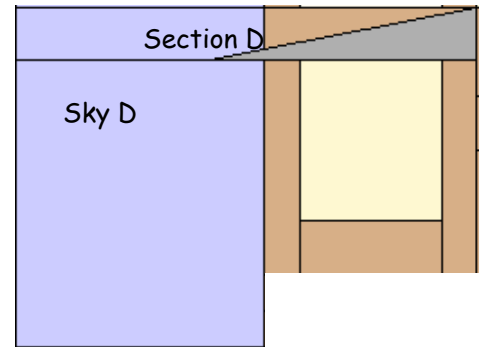


To the bottom of each W window, add siding section P. then add siding sections K to each side. Each piece should measure $3\frac{1}{2}$ inches by 4 inches.



Sew the sky D to the left of one window section (leave open for 1 inch at the bottom so we can add the base of the house later).

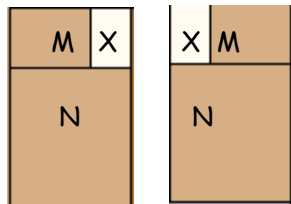
Sew the pieced sky section D above the window
Your piece should now measure
7 inches wide.



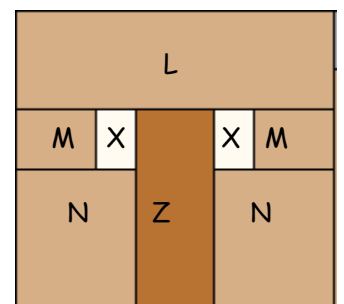
To each of the two small windows X, add a siding section M.

Add a siding section N below each window

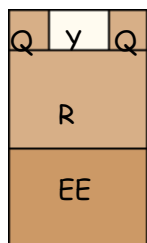
These should measure 3 inches by 2 inches



Sew the door between the two sections, and add siding section L above. Your section should now measure $4\frac{1}{2}$ inches by $4\frac{1}{4}$ inches

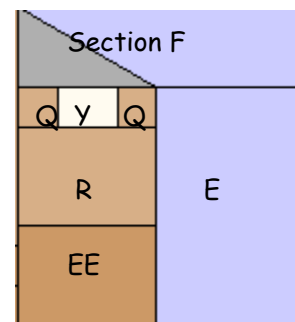


Sew siding Q to either side of window Y - measuring 1 in by $2\frac{1}{4}$ in.
Sew siding R below the window section. Add Base section EE below.



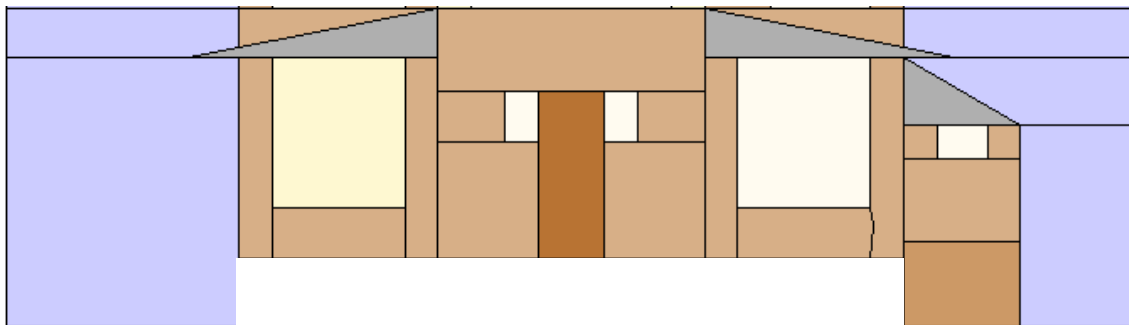
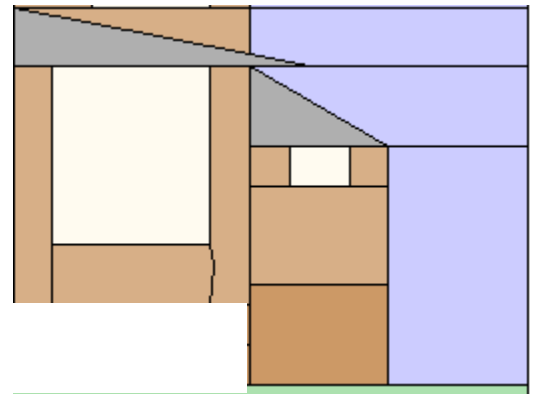
The section measures $3\frac{1}{2}$ by $2\frac{1}{4}$ inch

Sew Sky E to the right of the window, and Sky Pieced Section F to the top of the section.
 $4\frac{1}{2}$ inches by 4 inches



Sew this piece to the remaining W window section (even at the top, leave the bottom $\frac{1}{2}$ inch open to finish the seam later). Add Sky Pieced Section E above the piece

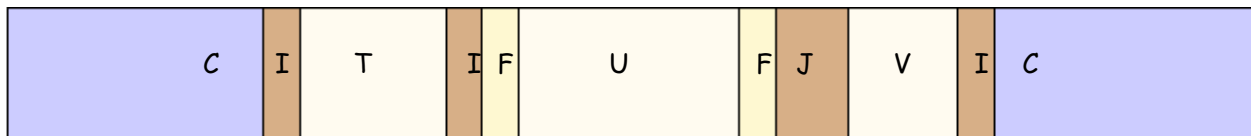
Complete the first floor of the house by sewing the three House sections together.



Sew the base onto the first floor, then finish those partial seams!
This section will measure $5\frac{1}{4}$ inches by 17 inches

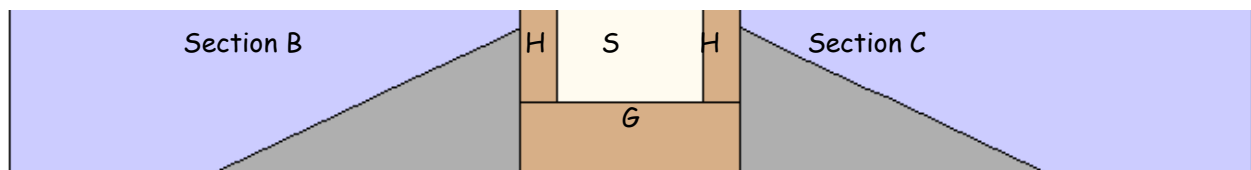
Sew it to the front yard section FF.

The next floor is a lot simpler:



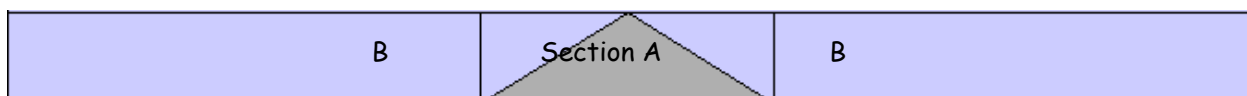
This section is $2\frac{1}{4}$ inches tall. Sew it above the main floor.

For the next floor - Sew Siding H sections to either side of Window S. Sew siding section G below the window and add the Sky Pieced Sections B and C.



This section will be $2\frac{3}{4}$ inches tall. Sew it above the second floor.

Sew a Sky B section to either side of the Roof Pieced section A.



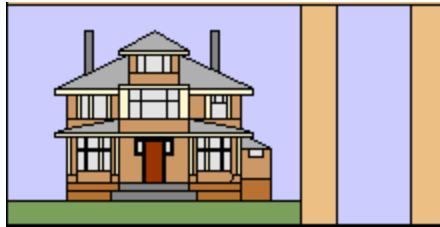
This section should be $1\frac{3}{4}$ inches tall. Sew it to the top of the house. Add the Sky A piece above the house. Once you have added embellishment to the block, trim it to $12\frac{1}{2}$ by $16\frac{1}{2}$ inches.

Extra Block:

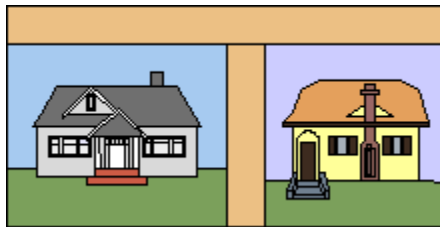
Between House #2 and House #3 - you have a spare block - $4\frac{1}{2}$ wide and $12\frac{1}{2}$ inches tall.

We have used this block for added vegetation - trees in once quilt - and wild flowers to match the wild border in the other. Use this to add something of your own to the street - try appliqueing or painting your favourite tree, or add a picture! Or you could always find a neat fabric to fill in.

Put sashing on either side of this block and attach it to the right of House #3.

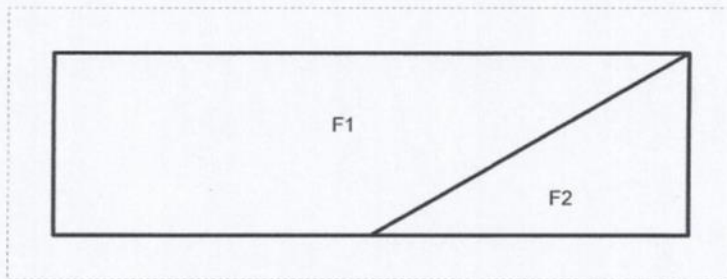
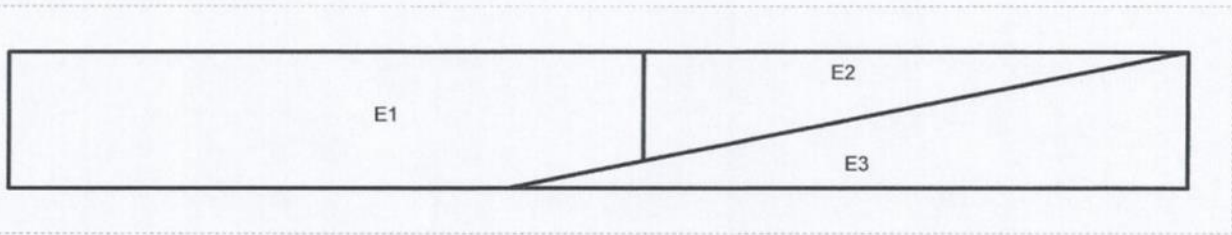
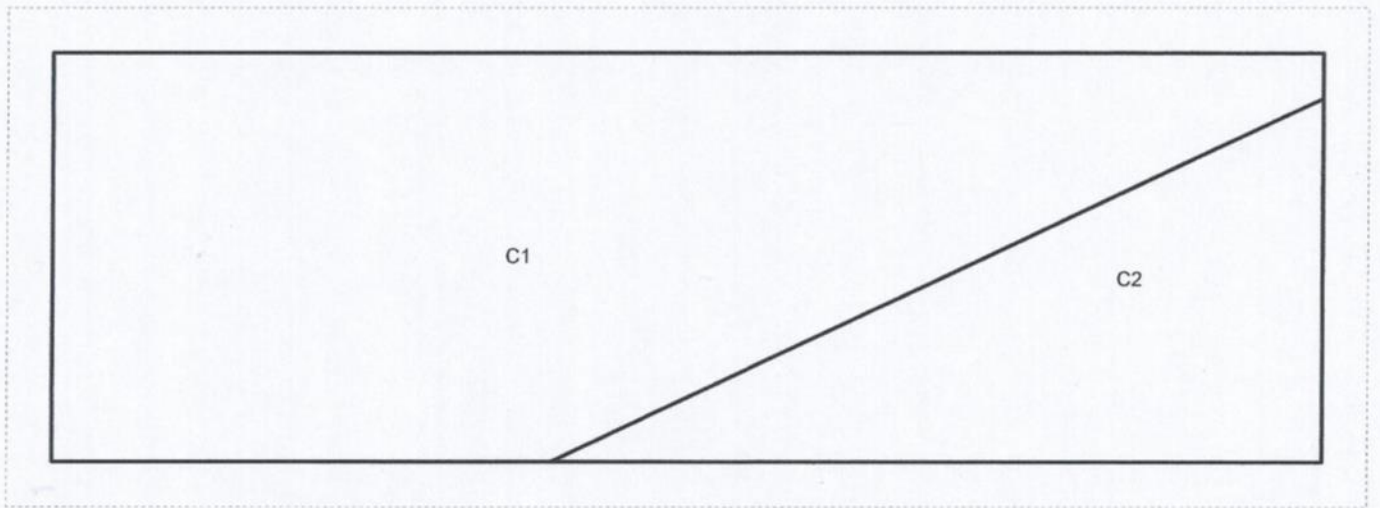
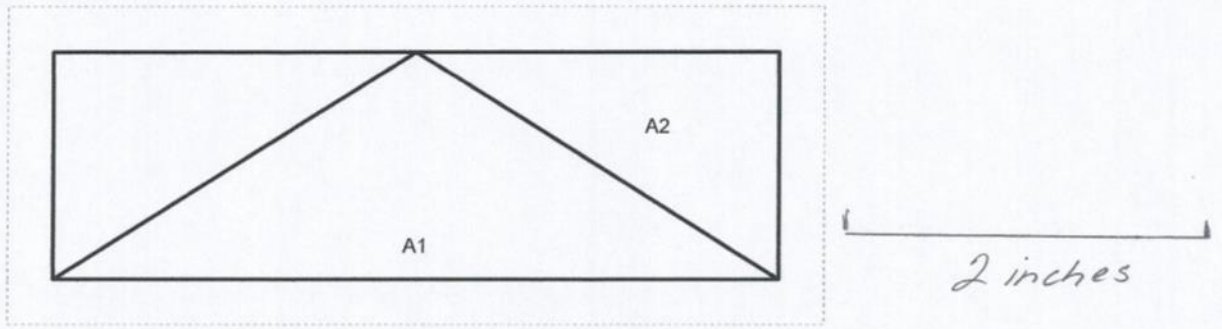


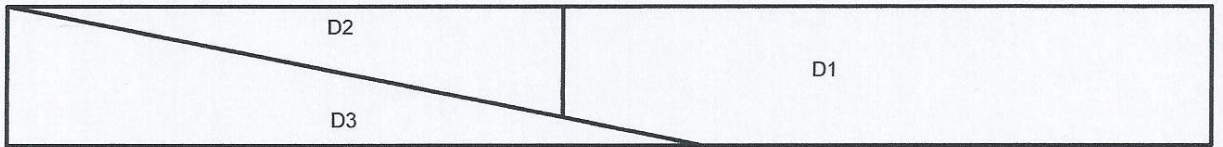
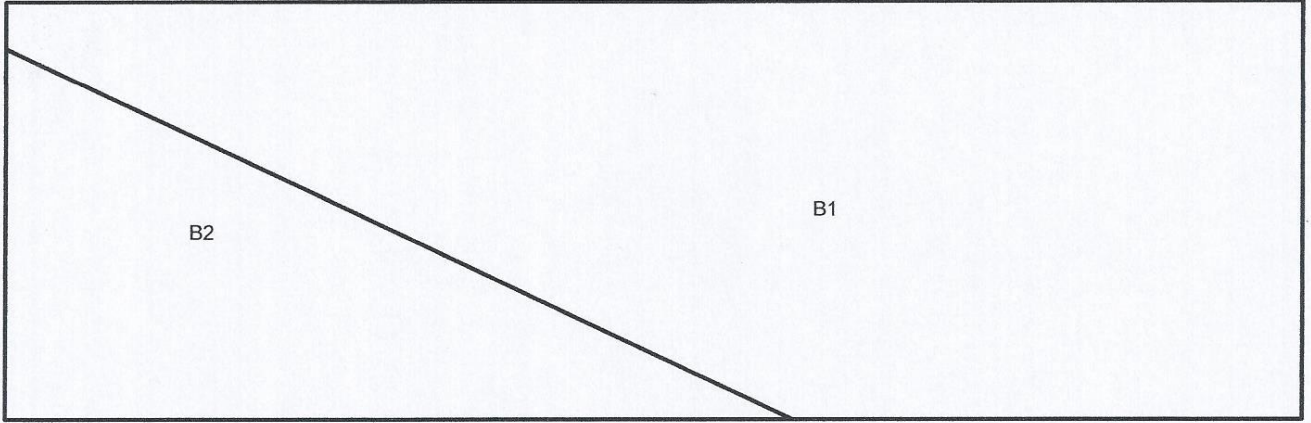
Put sashing between Houses #1 and #2, then add sashing to the top of the resulting section.



Sew the two sections together to make the bottom 'row' of your quilt. If you wish to quilt it in sections, you can start with this one - making sure you have enough backing and backing for the borders which you will add later.

House #3 - piecing diagram





2 inches