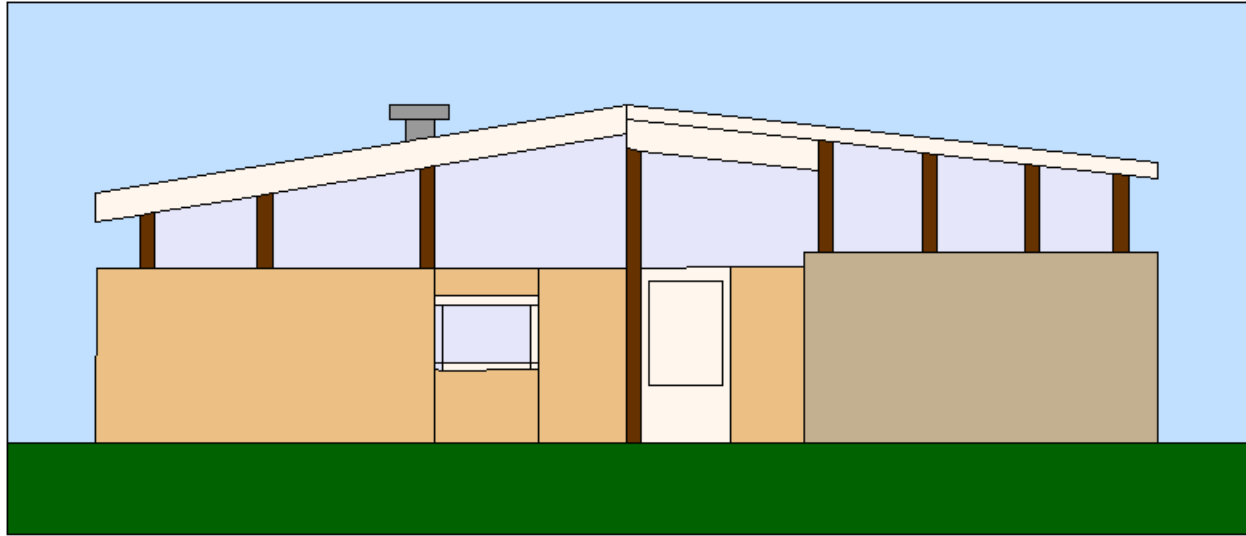


# House #4

8 by 20 inches finished

8 ½ by 20 ½ inches unfinished



This very 'modern' long, sleek house is very simple but you have lots of room to add curb appeal! To simplify the piecing, we have adjusted some of the lines. That's a wonderful metallic wall next to the door.

The windows are going to be tricky with that slanted top line, but I know you can do it.

## Sky

Pieces for paper piecing

2 - 1 ½ by 8 inches (O)

## Siding

1 - 6 ¼ by 3 ½ inches (c)

1 - 2 ¼ by 1 inches (D)

1 - 2 ¼ by 1 ¾ inches (E)

1 - 2 by 3 ½ inches (F)

1 - 1 ¾ by 3 ½ inches (G) -  
could be metallic trim



## Stonework

1 - 6 ½ by 3 ½ inches (H)

## Windows

Paper Pieced on top floor

1 - 2 ¼ by 1 ¾ inches (I)

1 - 1 ½ by 2 ¼ inches (J)

## Door

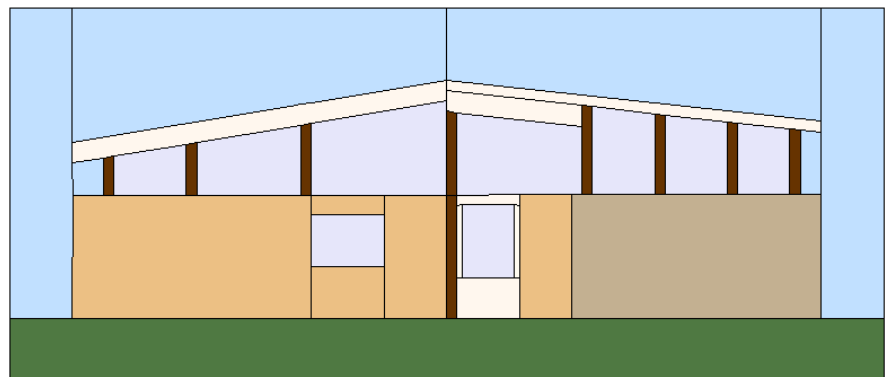
1 - 2 by ¾ inches (K)

1 - 2 by 2 ½ inches (L)

Trim - ¾ by 4 ½ inches (M)

## Front Yard

1 - 21 by 2 inches (N)



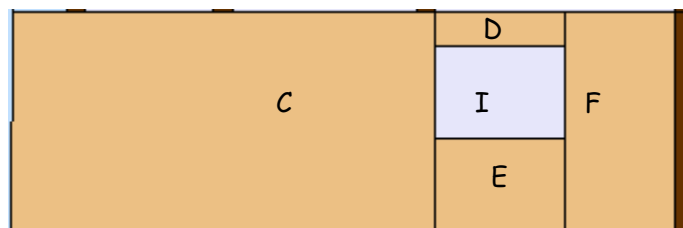
Start by paper piecing the upper windows and roof - let's get that over with first!

The chimney is  $\frac{1}{2}$  inch wide and the top is  $\frac{1}{4}$  inch above the roof. The topper is  $\frac{1}{4}$  inch by 1 inch - or whatever chimney you fancy adding.

Sew siding D and E to the Window I, adding siding C to the left and siding F to the right.

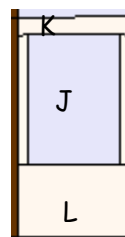
Finish off by adding the pillar M.

This should measure  $4\frac{1}{2}$  by  $9\frac{3}{4}$  inches



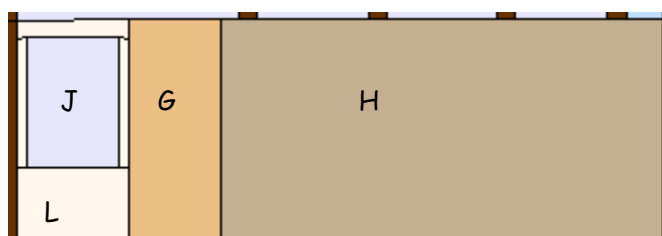
Sew a  $\frac{3}{4}$  inch strip of the door to both sides of window J, Then add door pieces K to the top and L to the bottom of the window.

The screen door should measure  $4\frac{1}{2}$  by 3 inches.



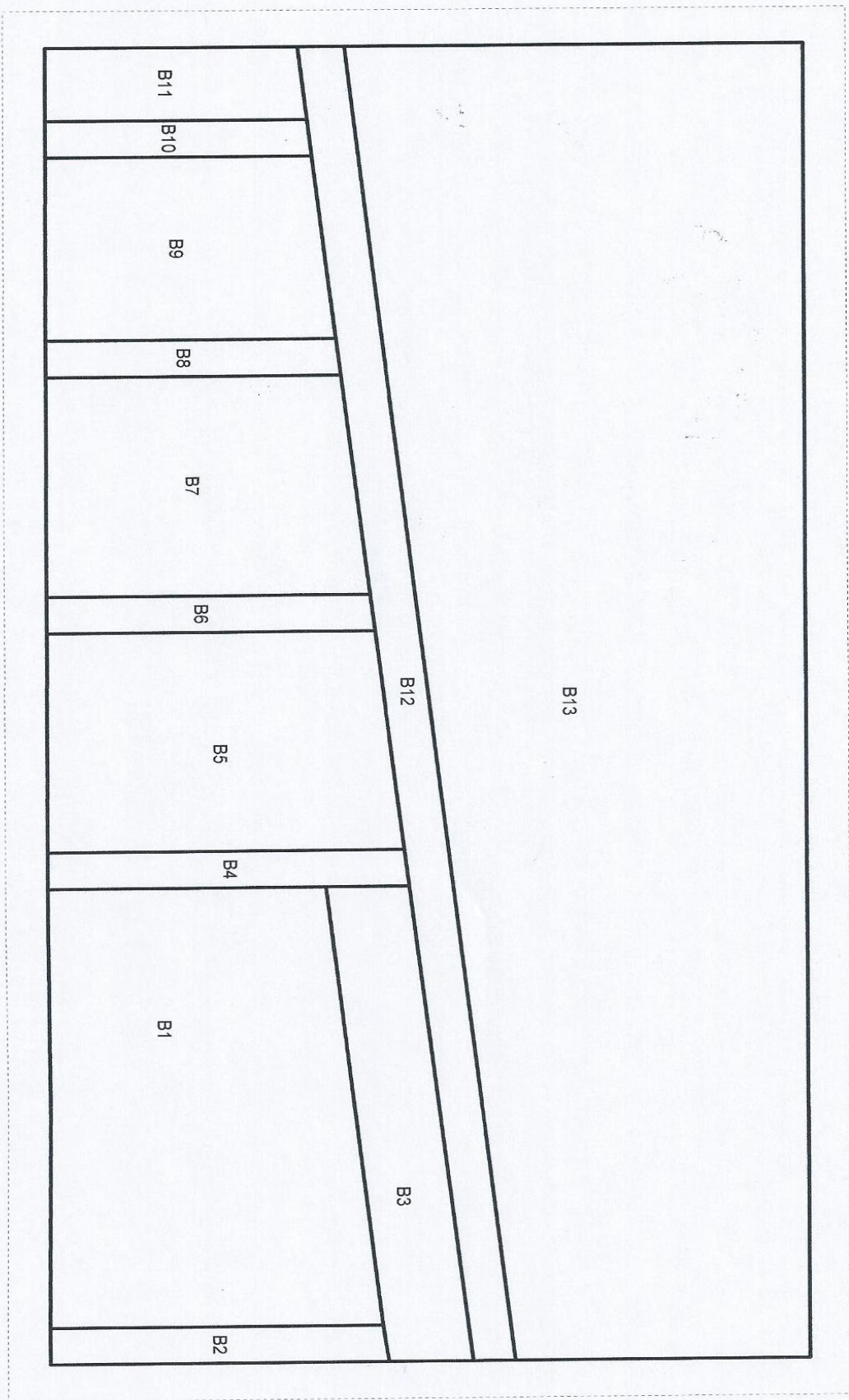
Add the siding piece G, then the stonework to the right of the door.

This half the house should measure  $4\frac{1}{2}$  by  $9\frac{1}{2}$  inches



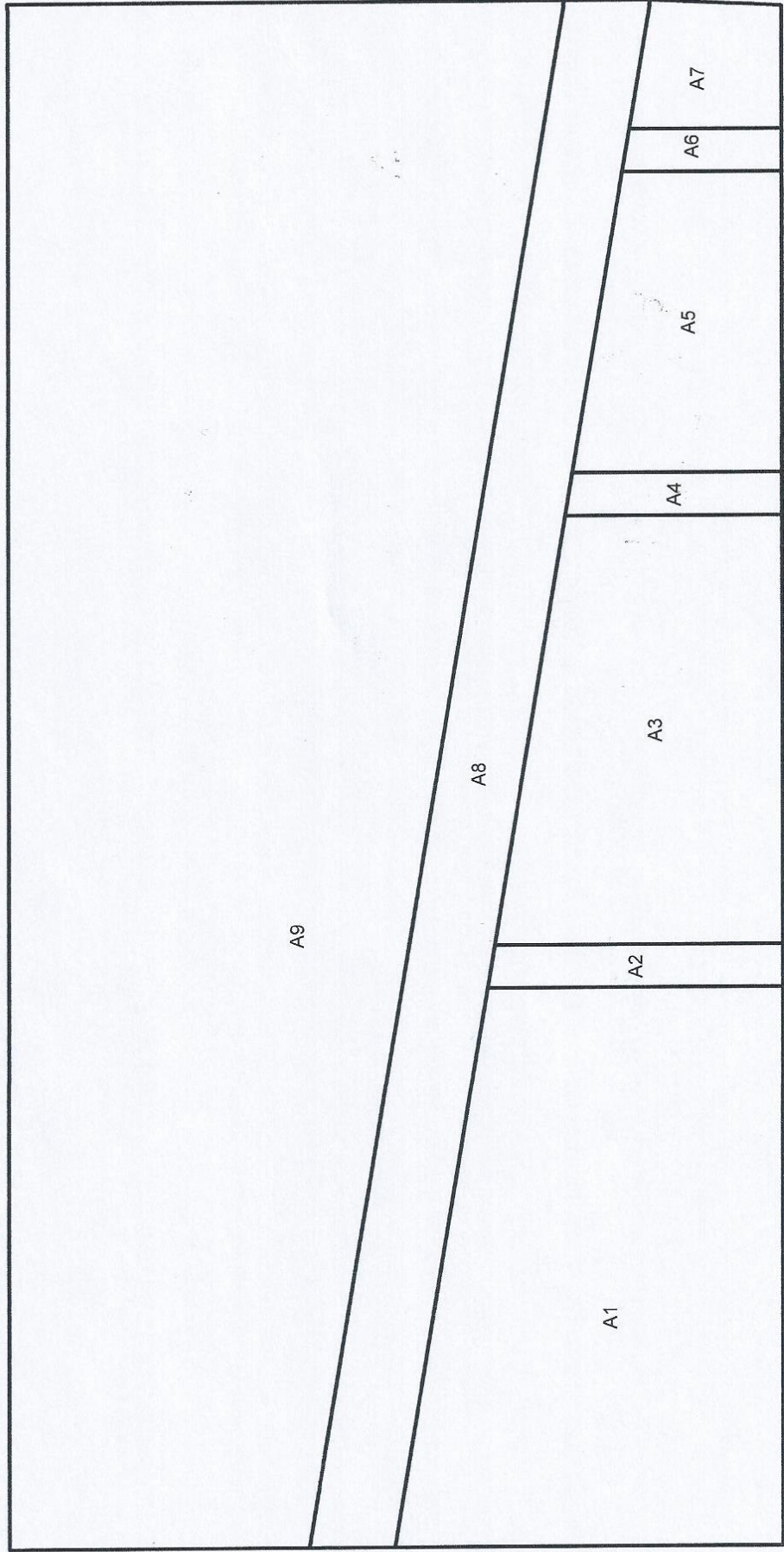
Sew the two halves of the house together, and pop the roof section on top! Add the sky sections O to both sides of the house, and add the front yard below.

House #4 piecing diagram



2 inches





1 ——— 1  
2 inches