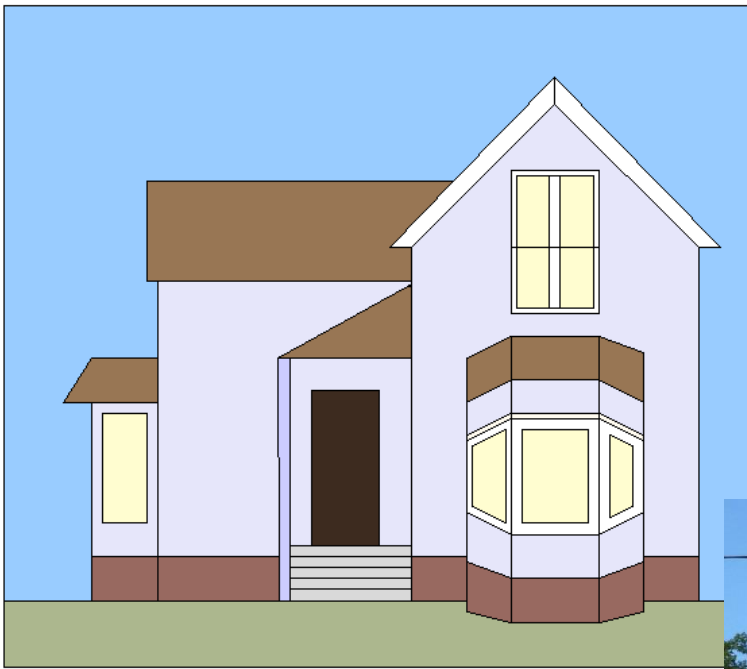


# House I

14 by 16 inches finished

14 1/2 by 16 1/2 inches unfinished



These are three of my favourite houses in New West. I pass three 'identical' houses on Sixth Avenue as I head to/from work. Initially they look tall and thin, but a closer look reveals that they are L shaped, with an extra section in the back.

One house would make a great Haunted House for Hallowe'en, it's not too well kept on the outside. Another has been recently upgraded, and the third is in the middle. All three have wonderful gingerbread! Decide what state your house will be in and what decorations you will add.



Sky  
Pieces  
for  
Paper



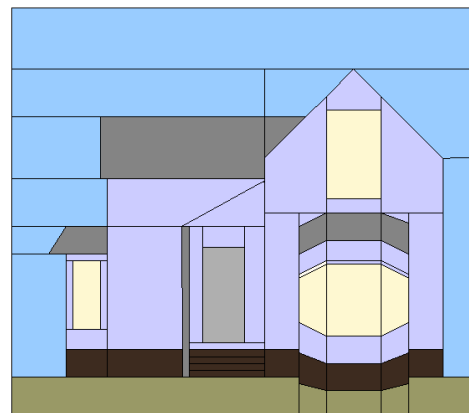
- Pieced Sections A, B, F, G  
 1 - 17 by 2 3/4 inches (H)  
 1 - 9 3/4 by 2 1/4 inches (I)  
 1 - 3 3/4 by 2 1/4 inches (J)  
 1 - 4 by 2 1/4 inches (K)  
 1 - 2 1/2 by 5 inches (L)  
 1 - 1 3/4 by 6 1/2 inches (M)

- Stairs  
 1 - 3 1/4 by 1 3/4 inches (Z)

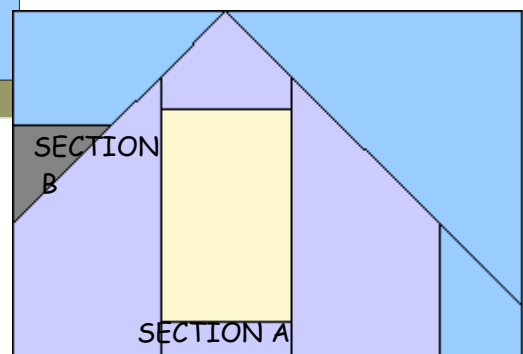
- Siding  
 Pieces for Paper Pieced Sections A, C, D and E  
 2 - 3/4 by 3 inches (N)  
 1 - 2 by 3/4 inches (O)  
 1 - 2 by 1 1/4 inches (P)  
 1 - 3 1/2 by 5 inches (Q)  
 1 - 2 by 1 1/4 inches (R)  
 1 - 1 by 4 3/4 inch (S)  
 1 - 1 1/2 by 4 3/4 inches (T)  
 2 - 1 3/4 by 5 1/2 inches (U)

- Base:  
 Pieces for Paper Pieced  
 Sections C,D,E  
 1 - 2 by 1 1/2 inches (W)  
 1 - 3 1/4 by 1 1/2 inches (X)  
 2 - 1 3/4 by 1 1/2 inches (Y)

- Window  
 1 - 1 1/2 by 3 inches (W1)
- Post  
 1 - 3/4 by 6 inches (V)
- Door  
 1 - 2 by 4 inches (D1)



- Roof  
 Pieces for paper pieced  
 sections F and G  
 1 - 6 1/2 by 2 1/4 inches (R1)



- Front Yard  
 1 - 11 by 2 inches (F1)  
 1 - 3 by 2 inches (F2)

First, let's get the paper piecing out of the way. Paper piece sections A through G. Sew Section B to section A to get the peak of the roof.

This will measure  $8 \frac{1}{4}$  by  $5 \frac{3}{4}$  inches

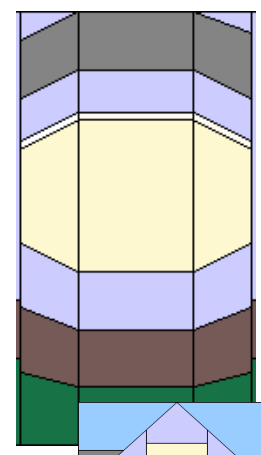
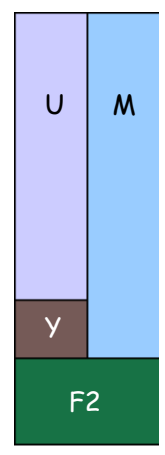
Sew the window sections C,D, and E together. This should measure  $4 \frac{1}{2}$  by 8 inches.

Sew a base piece Y at the bottom of each siding piece U. Sew sky right of one piece, then sew front Yard piece F2 below this

This will measure 3 by 8 inches, and should be sewn to the right of the window section.

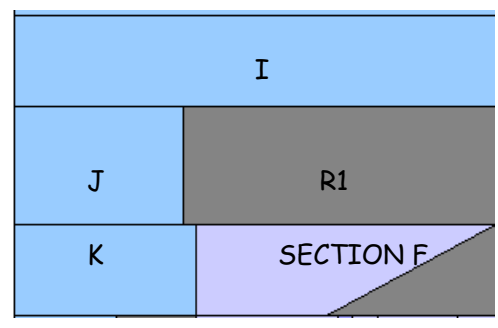
The other UY piece should be partially sewn on the left of the Windows even at the top and leaving  $1 \frac{1}{2}$  inches unsewn at the

Sew this piece to the base of the roof peak sections AB.



piece M to the section.

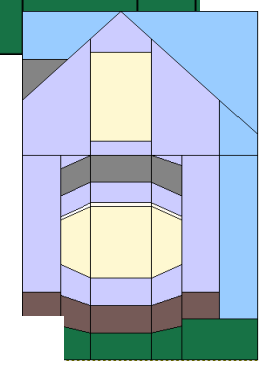
bottom.



Sew sky piece J to the right of roof piece R1.

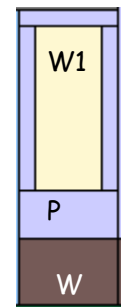
Sew sky piece K to the right of Paper Pieced  
Sew sky piece I above the J-R1 section, and below.

This piece will measure 11 by  $5 \frac{1}{2}$  inches .

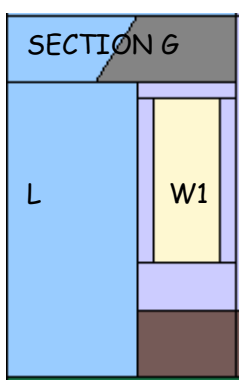


Section F.  
piece K-F

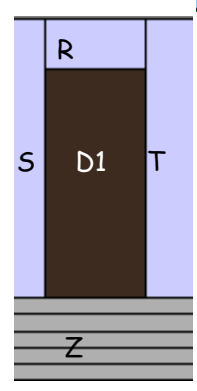
Sew the siding pieces N to either side of the window W1, then sew siding piece O above the window. Siding piece P goes below the window with base piece W below that.  
This will measure 2 by 5 inches.



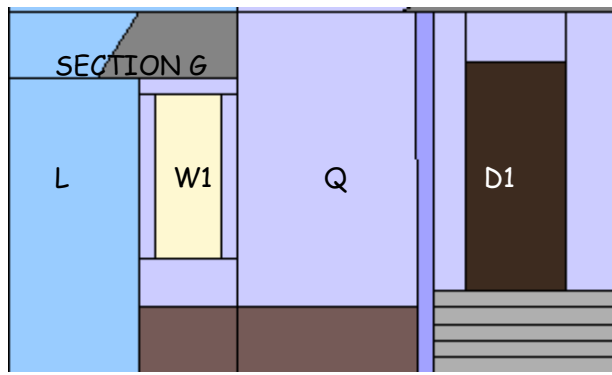
Add sky piece L to the left, and top the piece with Paper pieced section G



Now, for the door - Sew siding piece R above the door, D1 add siding piece S to the left of the door and siding piece T the right. Sew the stairs below the door.  
This piece will measure  $3 \frac{1}{4}$  by 6 inches.



and  
to



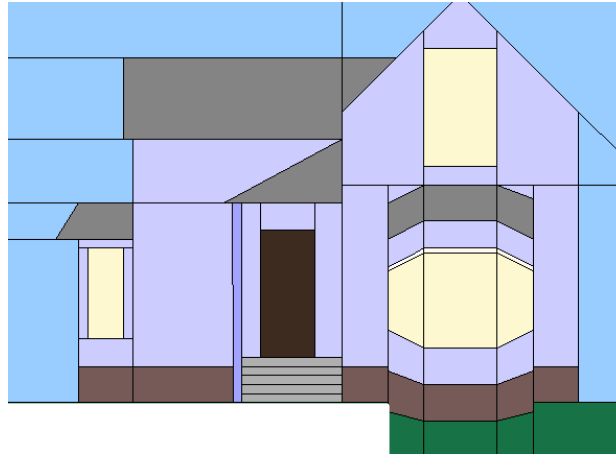
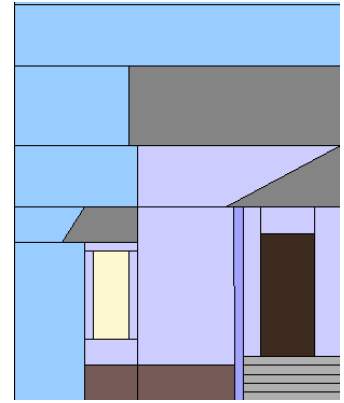
Sew siding piece Q above base piece X. Sew the post to the right of the piece. The piece will measure  $3\frac{1}{2}$  by 6 inches.

Sew the Q section between the window and the door.

It will now measure  $9\frac{3}{4}$  by  $9\frac{3}{4}$  inches.

Sew the roof section above this piece.

Now sew the two 'halves' of the together.



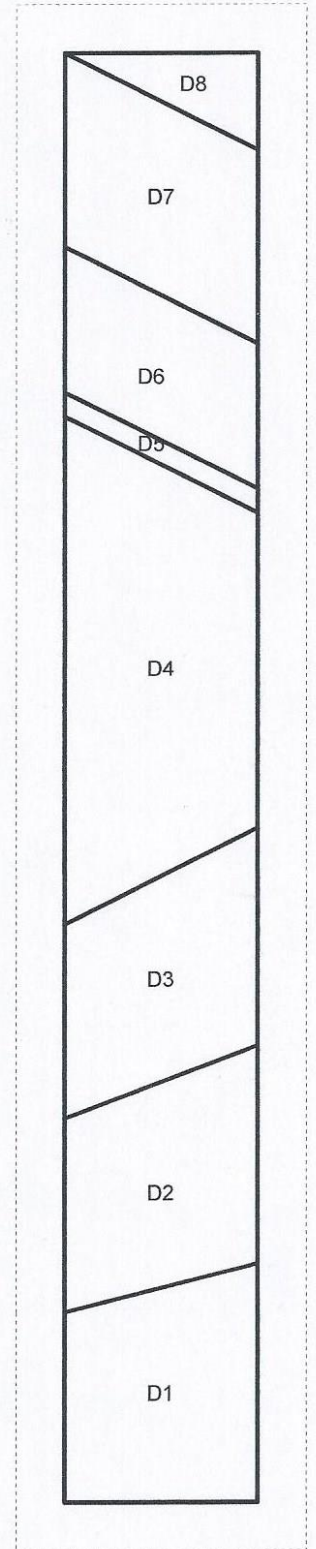
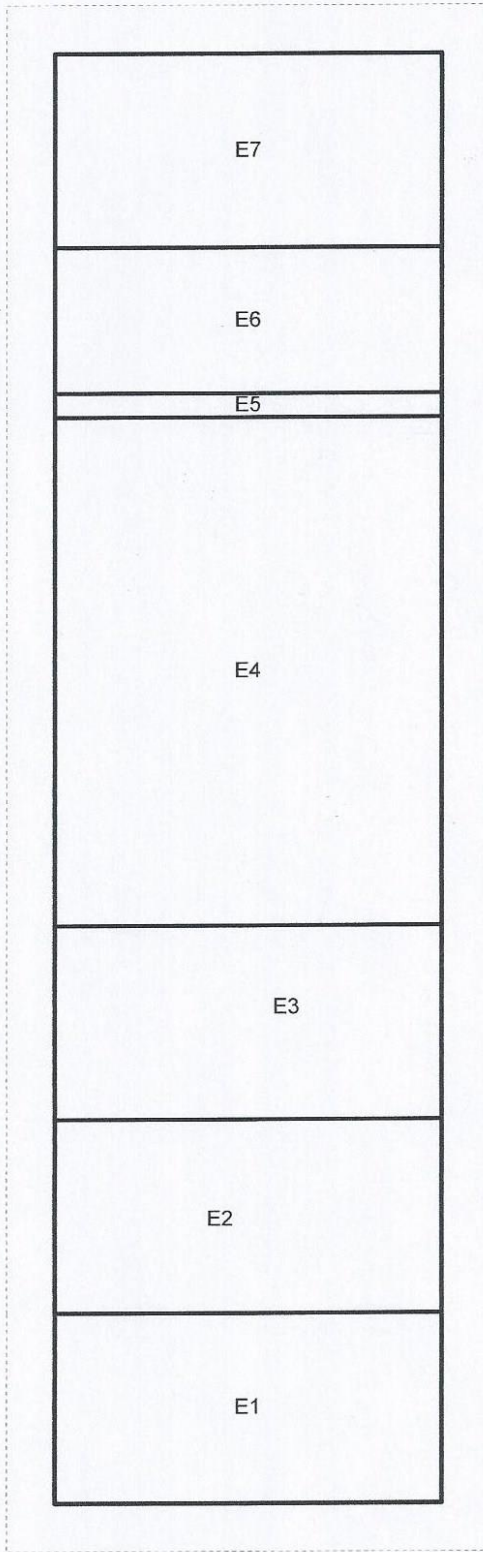
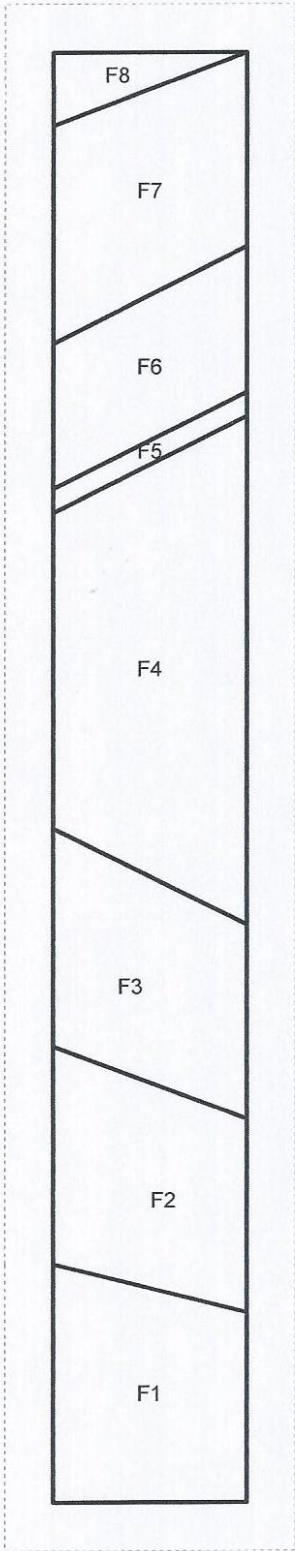
Sew the front yard to the base, and finish off that partial seam by the windows.

The final step is to sew sky piece H to the top of the house.

The eaves trim is  $\frac{1}{2}$  inch finished, and sits just above the peak seams.

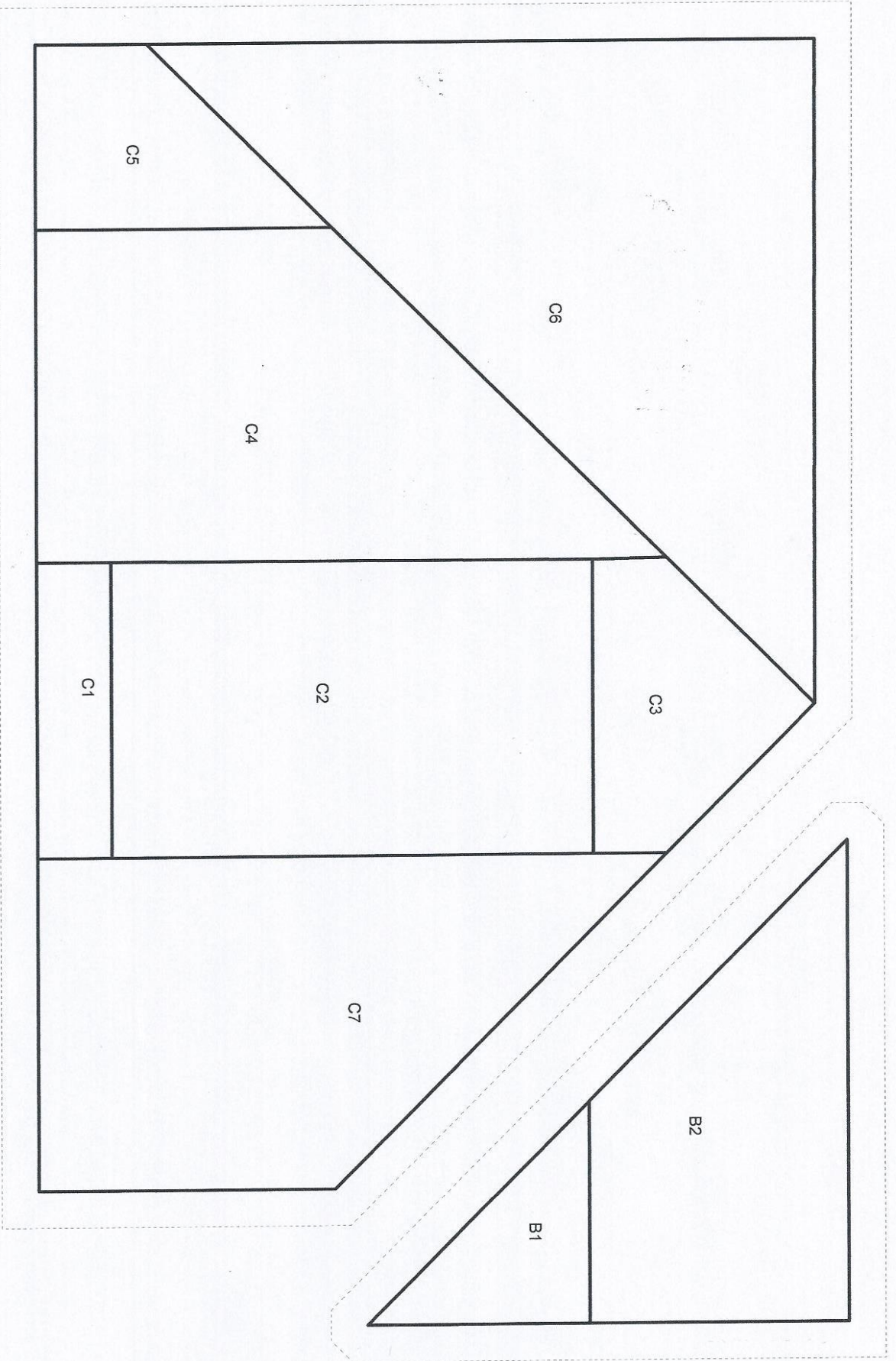
Enjoy adding the gingerbread (try lace trim, it should do nicely), and do you see the finials that are at the roof peaks in the picture of the updated house?

# House #6 - Piecing Diagram

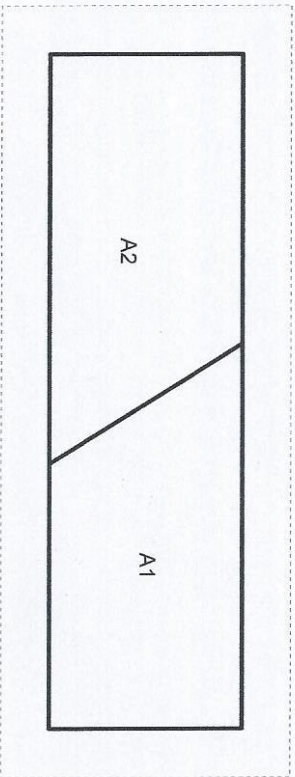
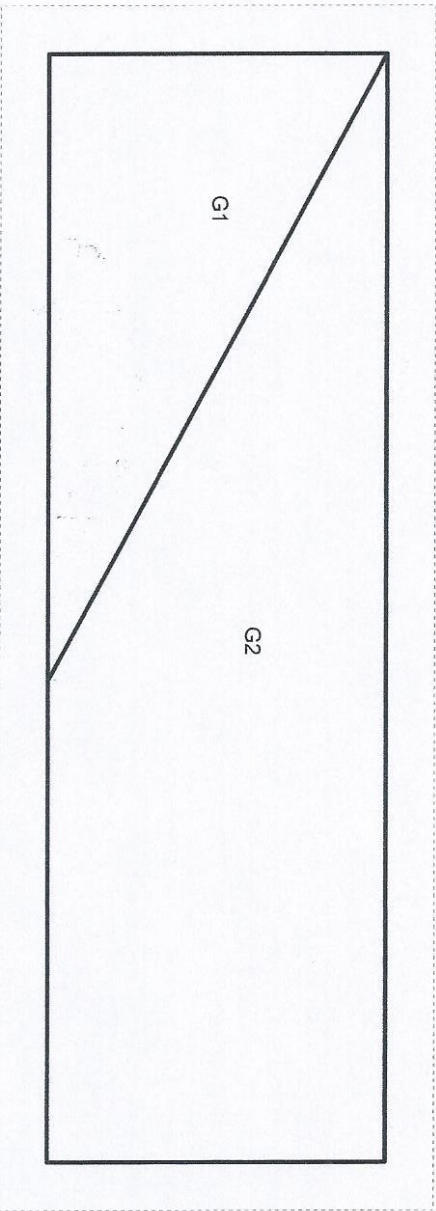


2 inches

# House #6 - Piecing Diagram



2 inches



2 inches

