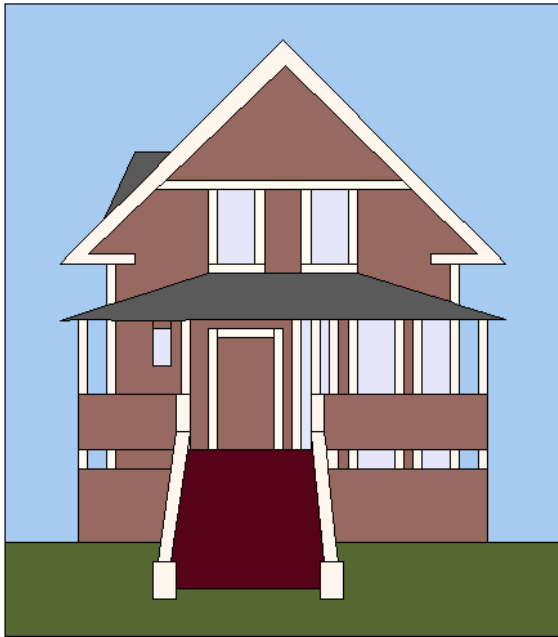


House #7

14 inches by 16 inches finished
14 ½ inches by 16 ½ inches unfinished



This lovely old house with its bright red steps looks so welcoming. The bay windows on the right almost shine like mirrors, reflecting the beautiful tree in the front yard.

Imagine what the house must be like if those flowerbeds beside the stairs were full of bright blossoms.

We are going to do just a few sneaky bits with the paper piecing, and with the windows and trim to make life easier.

Have fun with this one - it's a real beauty.



Sky

1 - 15 by 1 ½ inches (G)

2 - 2 ½ by 6 ½ inches (H)

1 - 1 by 10 inches (I)

Pieces for paper piecing sections B,C,E,and F

Siding

1 - 1 ½ by 2 ½ inches (J)

1 - 1 by 1 ¼ inches (K)

1 - 1 by 4 inches (L)

1 - 3 ¼ by 2 inch (M)

1 - 5 by 2 inches (N)

1 - 2 ¼ by 1 inches (O)

1 - 3 ¼ by 2 ½ inches (P)

1 - 5 ¼ by 2 ½ inches (Q)

Plus pieces for the Paper Pieced sections A, D, E and F

Windows

1 - 1 by 1 ½ inches (R)

1 - 5 by 4 by 5 inches (S)*

Plus two pieces for the paper pieced windows in Section A

Door

1 - 2 by 3 ½ inches (T)

Steps

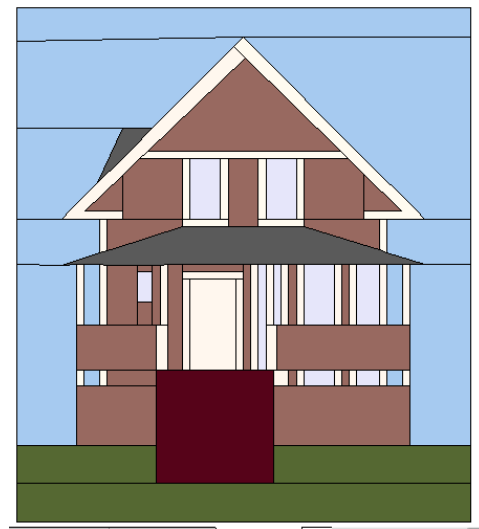
1 - 5 by 4 ¼ inches (U)

Front Yard

1 - 5 by 1 ¾ inches (V)

1 - 7 by 1 ¾ inches (W)

1 - 15 by 1 ¾ inches (X)



NOTES:

You will also need some $\frac{3}{4}$ inch strips of siding - about 18 inches or so, and about 40 inches of $\frac{3}{4}$ inch wide trim.

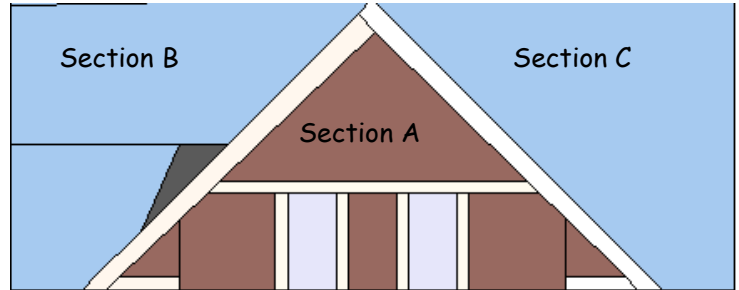
First, let's do the paper piecing as there is quite a bit on this house.

Section A has those two little bits of trim on the end triangles. The first one is pretty easy, but the other is a bit tricky. When you sew on Section A12, just do a partial seam, leaving the bottom half of the seam open. Add the trim A13, then complete the seam with A11. Then carry on...

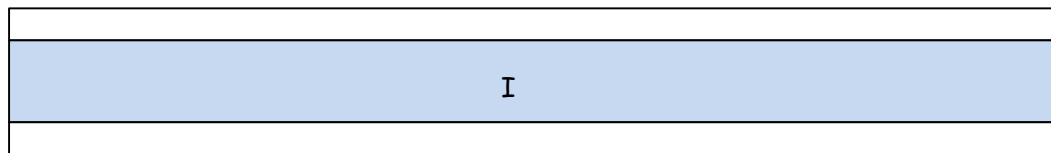
Sew sections B and C to the centre A section. This should be $6\frac{1}{2}$ by 17 inches.

As well, sew E and F to the D section. Then join the two sections.

Add sky piece G and we have the upper floor complete. This will measure 9 by 17 inches.

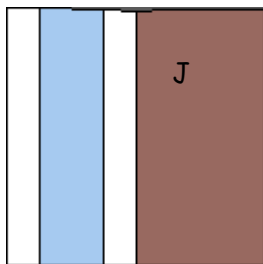


Sew $\frac{3}{4}$ inch trim lengths to both long edges of the sky section I.



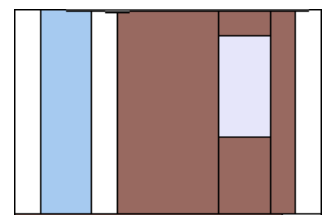
Cut this into the following lengths: $2\frac{1}{2}$ inches (I1), $4\frac{1}{2}$ inches (I2), and 1 inch (I3). Set aside the I2 and I3 piece for now.

Sew the siding piece J to the right of the I1 section.

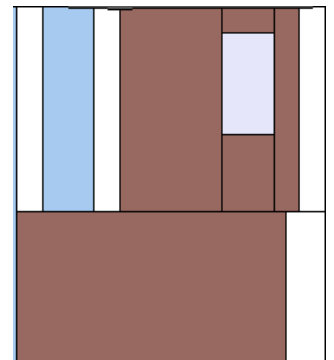


Next sew a $\frac{3}{4}$ inch siding strip to the top of window R, and siding piece K to the bottom of the window. Sew this to right of the siding piece J.

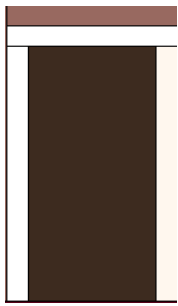
To the right of this - sew a $\frac{3}{4}$ inch strip of siding, then a $\frac{3}{4}$ inch strip of trim.



Sew a 1 inch wide trim to the left of siding piece M, and sew this to the bottom of the window section. This pieces will measure 4 inches by $3\frac{1}{2}$ inches.

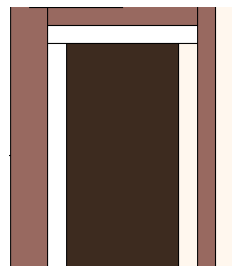


Sew $\frac{3}{4}$ inch trim pieces to either side and top of the door. Sew a $\frac{3}{4}$ inch siding piece to the top of the door.



Now add siding piece L to the left of the door. On the right, sew a $\frac{3}{4}$ inch siding strip, then a $\frac{3}{4}$ inch wide strip of trim. Sew this section to the window section.

The piece will measure 4 inches by $3\frac{1}{4}$ inches.

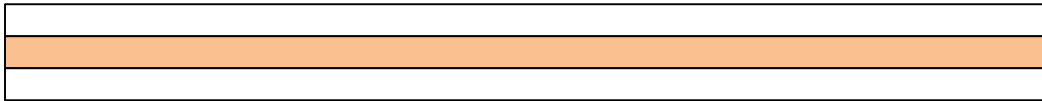


Sew this to the right of the window section, for a piece that will measure 4 inches by $6\frac{1}{2}$ inches

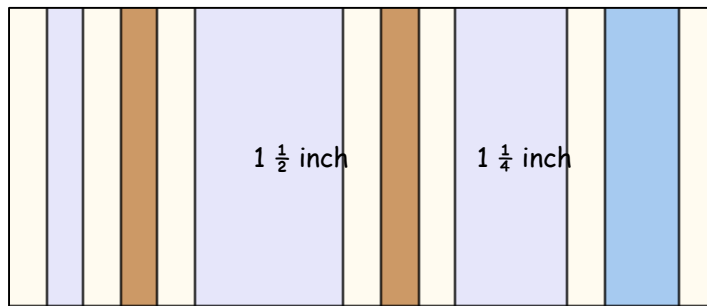
Now to do the bay window. First cut $\frac{3}{4}$ inch off the left side of the window, and sew that to the right side of the door section, trimming the bottom edge to fit.

Then cut the bay window into the following sections $\frac{3}{4}$ inch, $1\frac{1}{2}$ inch, $1\frac{1}{4}$ inch.

Now we need to do another strip set with a trim strip on either side of a siding strip. You will need 9 inches of the trim, each strip should be $\frac{3}{4}$ inch wide. Cut two $4\frac{1}{2}$ inch sections.



Now, lay out the window sections as shown below with the siding strips, the Sky strip I2 that you had set aside earlier, and one $\frac{3}{4}$ inch trim strip:



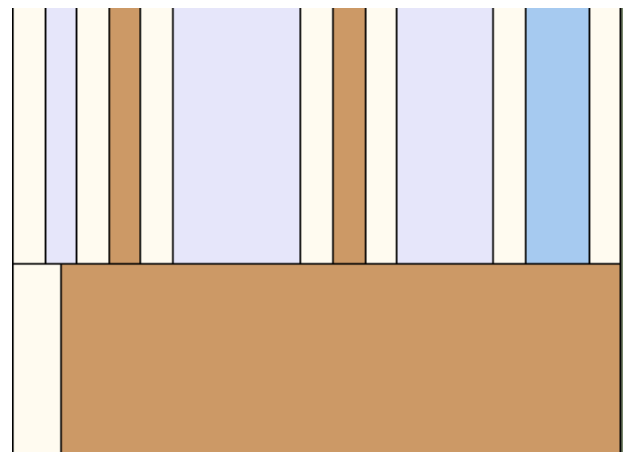
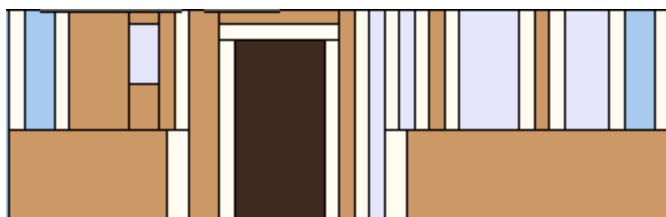
Once you have the window sewn, cut it into the portions above the deck trim, and that below.

Measure down from the top $2\frac{1}{2}$ inch and cut across the section.

On the lower section, do a little unstitching and remove that white trim on the left side. Set this section aside.

Sew a 1 inch wide strip of trim to the left of siding piece N, and sew it to the bottom of the bay window section:

Now you have enough to complete this section of the house, so sew this to the left side of the house as shown below:



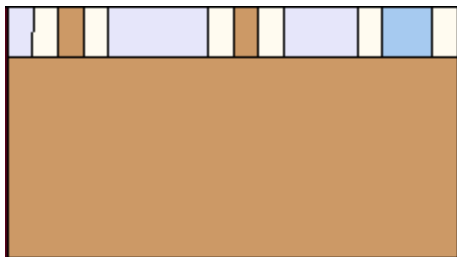
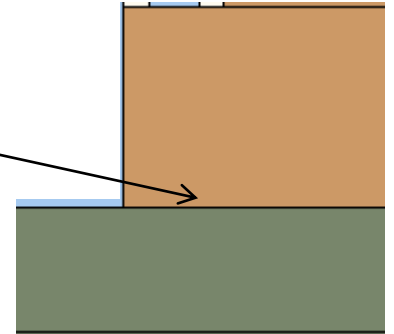
To complete the bottom of the house, start with the remaining sky strata piece (I3). Sew it to the siding section O as shown:



Sew siding section P below this section. The section will measure 3 inches by 3 1/8 inches.

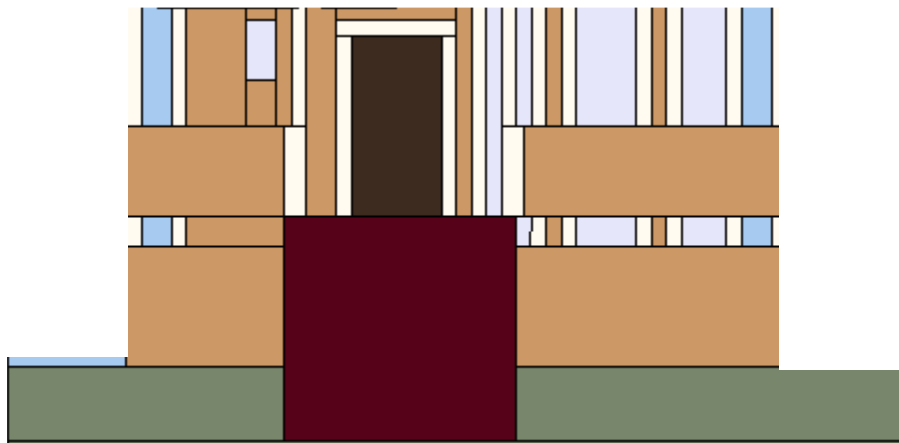
Now sew front yard section V to the bottom of the left side of the house, matching the right side, and leaving an inch or so unsewn on the left.

Now, trim the bottom section of the bay window to 1 inch tall, and sew it to the top of siding section Q:



Sew the front yard section W below this piece, matching the left side and leaving the right side unsewn for about an inch

Now sew the stairwell between the two sections of the house and front yard.

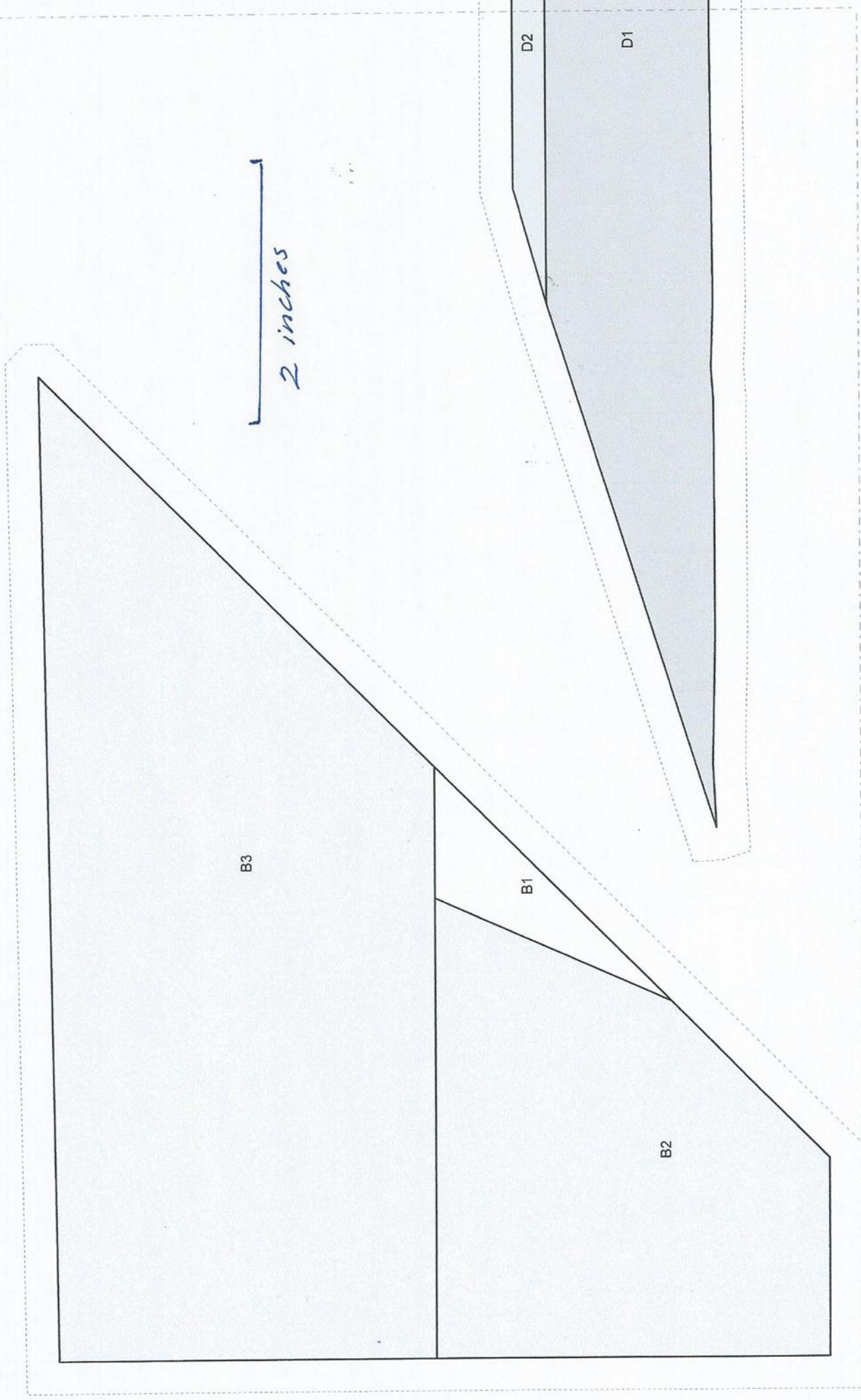


Now add the sky pieces H to either side of the house, and finish the front yard seams.

Sew this section under the roof sections, and sew the front yard section X across the bottom.

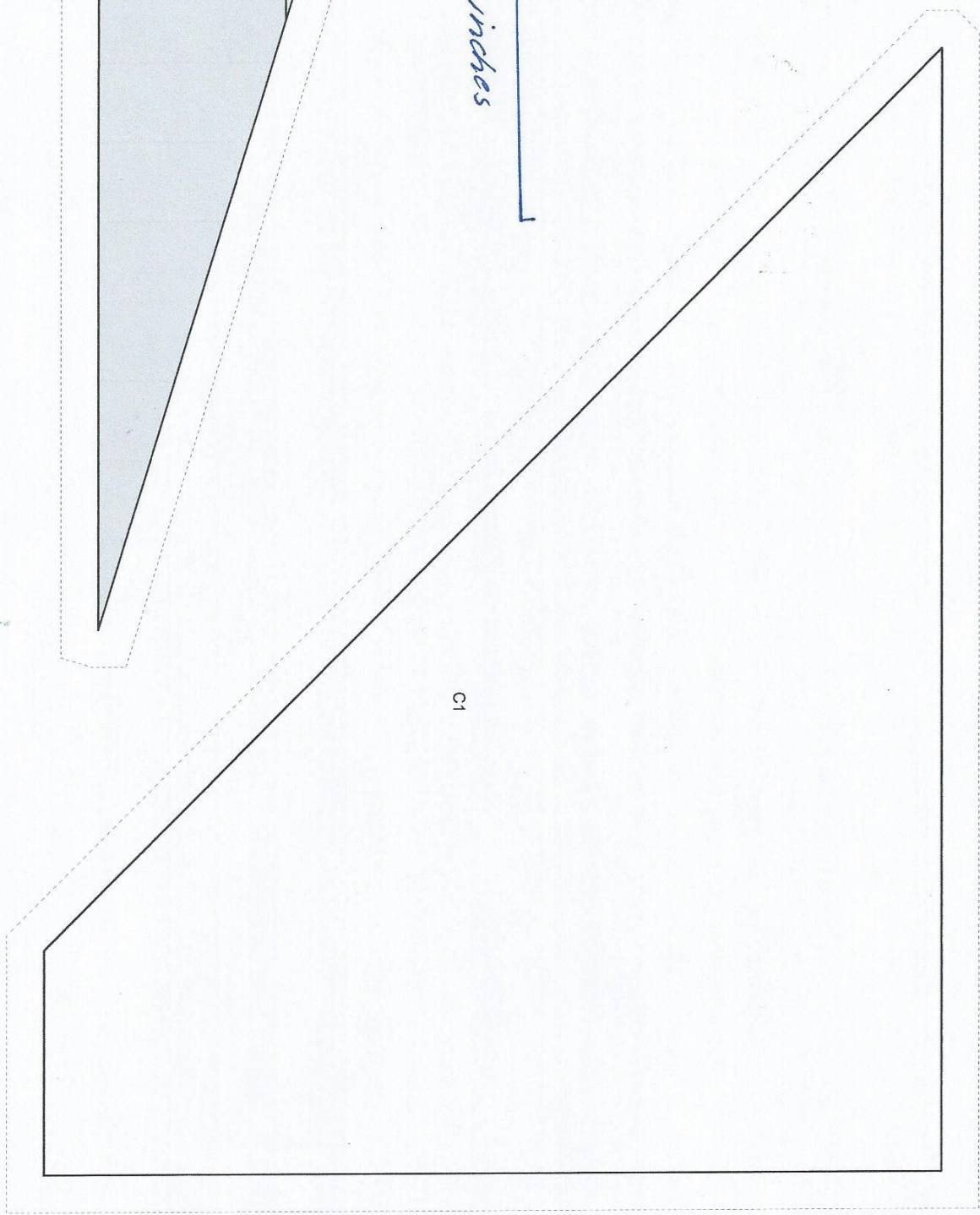
Now you are ready to add the trim to the stair section (and make it look like stairs), and trim your block!

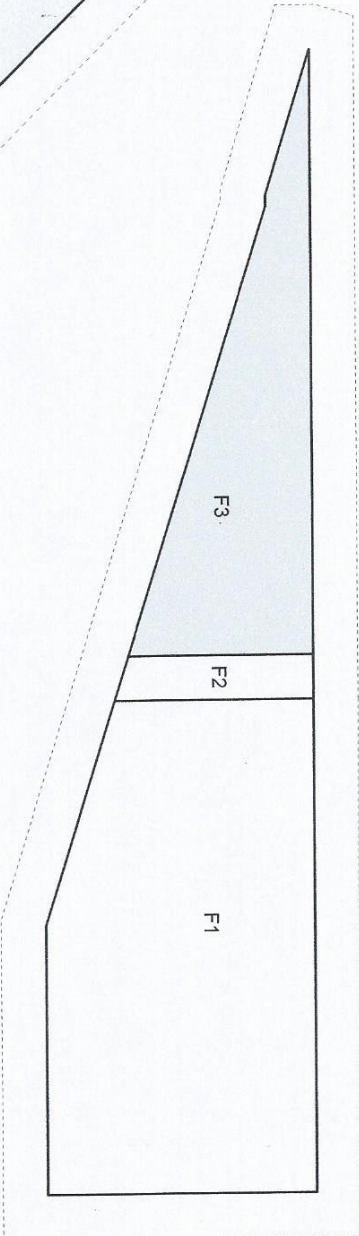
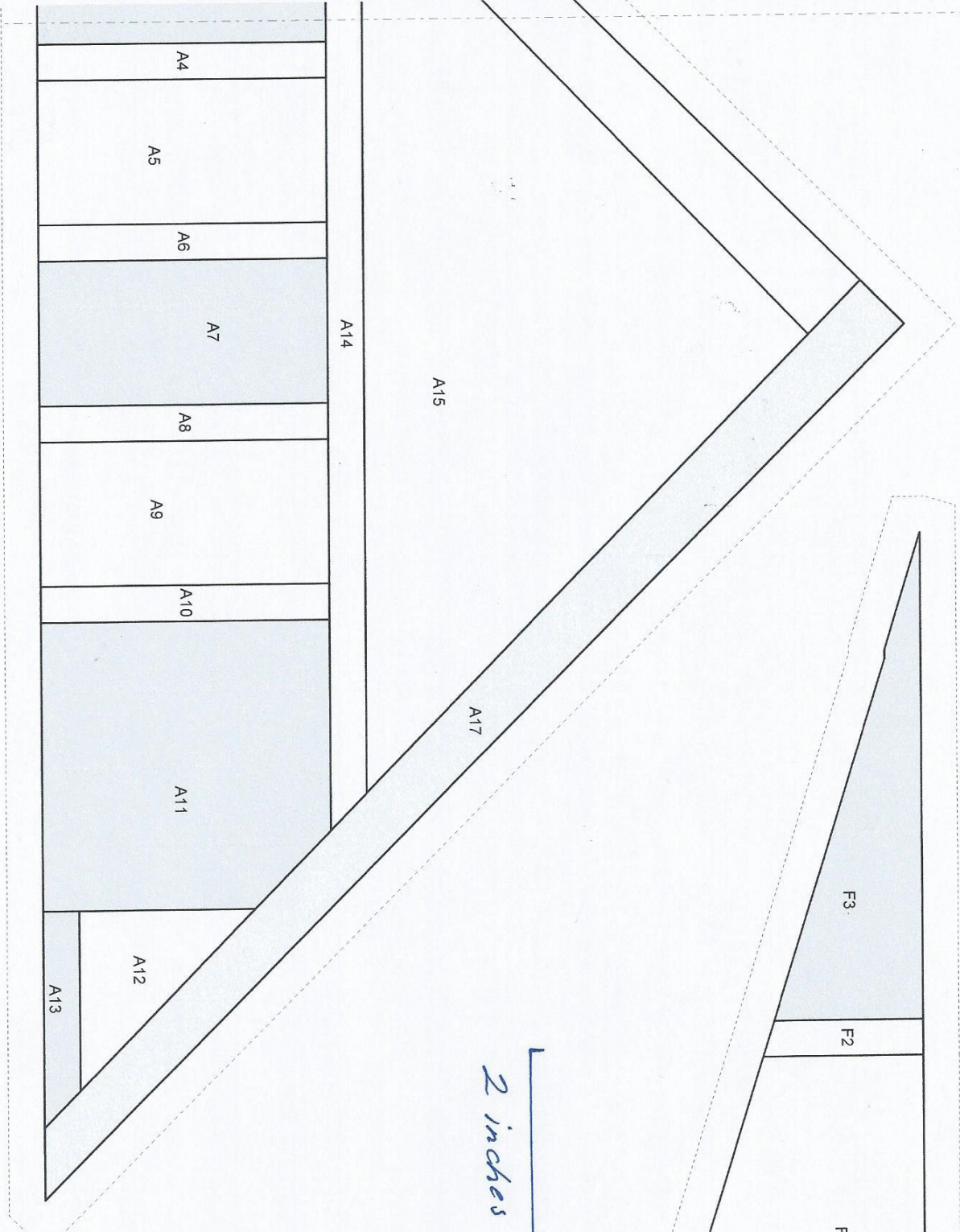
House #7 - Piecing Diagram



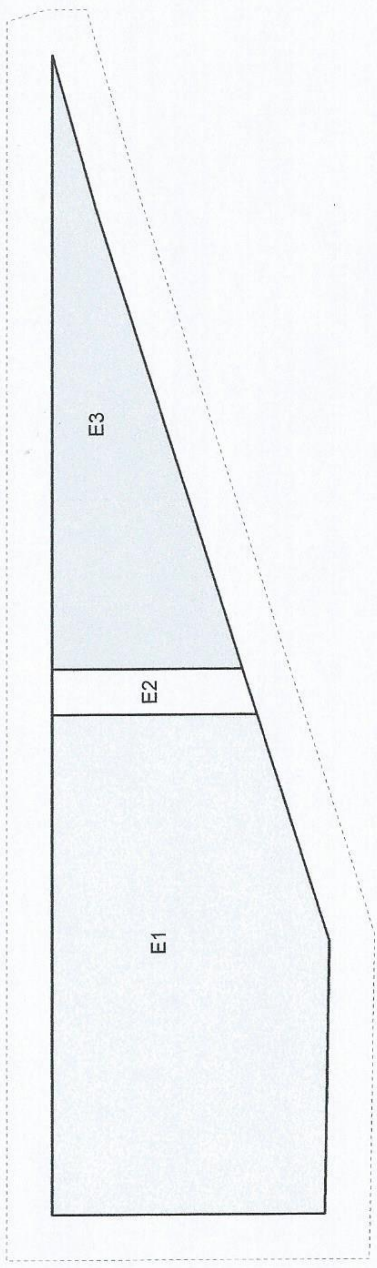
2 inches

01





2 inches



2 inches

