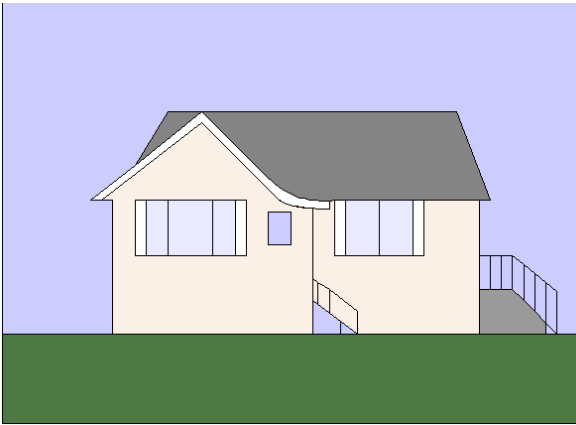


House 8

12 by 10 inches finished

12 $\frac{1}{2}$ by 10 $\frac{1}{2}$ inches unfinished



Jenn hasn't had much time to spend in her garden this year - so why not have fun with it - a neat lawn, an English country garden, a native grass jungle - what can you visualize for this perfect little house?

This house is just down the street from House #4.



Sky

1 - 13 by 4 $\frac{1}{2}$ inches (C)

1 - 3 by 3 $\frac{1}{2}$ inches (D)

1 - 2 $\frac{3}{4}$ by 2 $\frac{1}{2}$ inches (E)

1 - 2 by 1 $\frac{1}{2}$ inches (F)

Plus pieces for paper pieced section A and B

Roof - Paper pieced sections A and B

Siding

3 - 1 $\frac{1}{4}$ by 1 $\frac{3}{4}$ inches (G)

2 - 1 by $\frac{3}{4}$ inches (H)

1 - 1 by 1 $\frac{3}{4}$ inches (I)

1 - 5 by 2 $\frac{1}{4}$ inches (J)

1 - 2 by 1 $\frac{3}{4}$ inches (K)

1 - 4 $\frac{1}{4}$ by 2 $\frac{1}{4}$ inches (L)

Windows:

1 - 2 $\frac{1}{2}$ by 1 $\frac{3}{4}$ inches (M)

1 - 1 by 1 $\frac{1}{4}$ inches (N) - really the hole in the porch

1 - 2 by 1 $\frac{3}{4}$ inches (O)

Shutters

4 - 1 $\frac{3}{4}$ by $\frac{3}{4}$ inches (O)

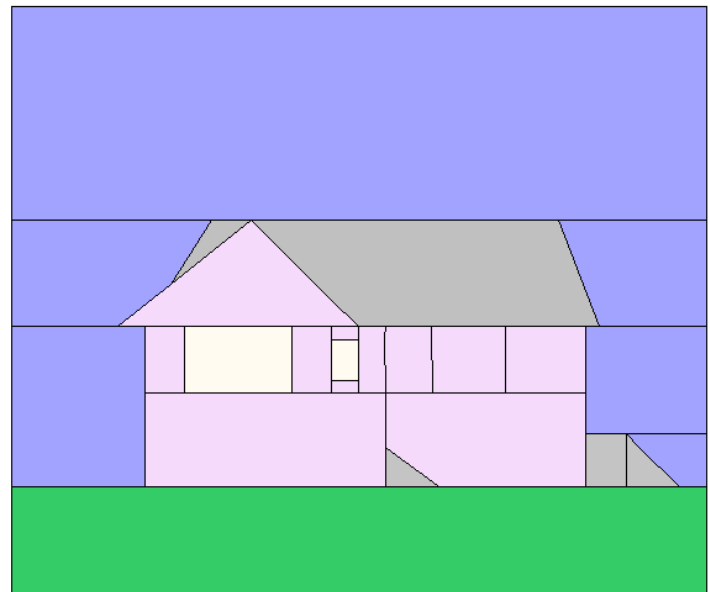
Stairs

1 $\frac{1}{2}$ by 1 $\frac{1}{4}$ inches (P)

2 - 1 $\frac{1}{2}$ inch squares for connector corners (Q)

Front Yard:

1 - 2 $\frac{1}{2}$ by 13 inches (R)

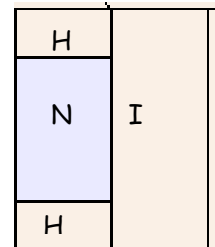
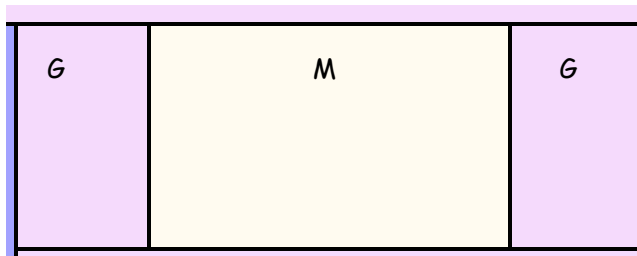


First paper piecing the roof pieces Sections A and B. Sew these sections together, and sew to Sky section D. If you would like a tree behind the house, you could applique it before you sew the Roof to the Sky.

TIP: Windows - 'Dress' the windows before you piece them - you might want to cut them a bit larger, and add the details, then cut them down to size.

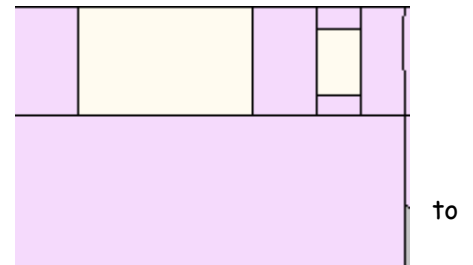
Now sew windows strips:

Sew siding sections G, and Window M together to form a strip $1 \frac{3}{4}$ by 4 inches.

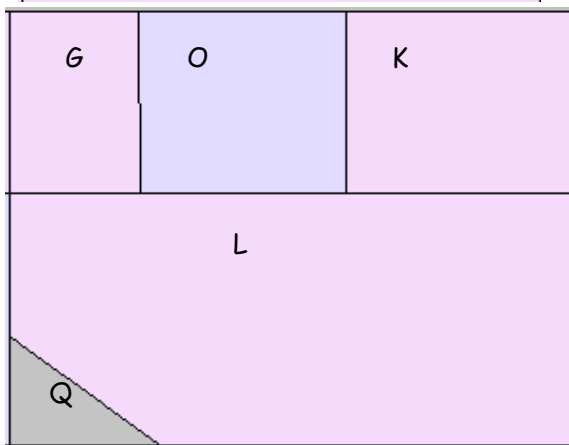


Next add the section with the small open space N - this isn't a window, just the porch opening, so you may want to make it of the back of the siding fabric - or slightly shade the siding. Sew siding H to the top and bottom of M, then add a siding strip I to the right side. This will measure $1 \frac{1}{2}$ by $1 \frac{3}{4}$ inches.

Sew this to the right of the first window piece, then add the siding J section beneath the windows - for a piece measuring 5 by $3 \frac{1}{2}$ inches.

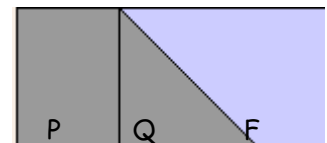


For the right side of the house, sew the last section G the left of window O, and K to the right for a section $4 \frac{1}{4}$ by $1 \frac{3}{4}$ inches



Now sew a connector corner Q to the bottom left corner of siding L, then sew it below our last window section - $4 \frac{1}{4}$ by $3 \frac{1}{2}$ inches.

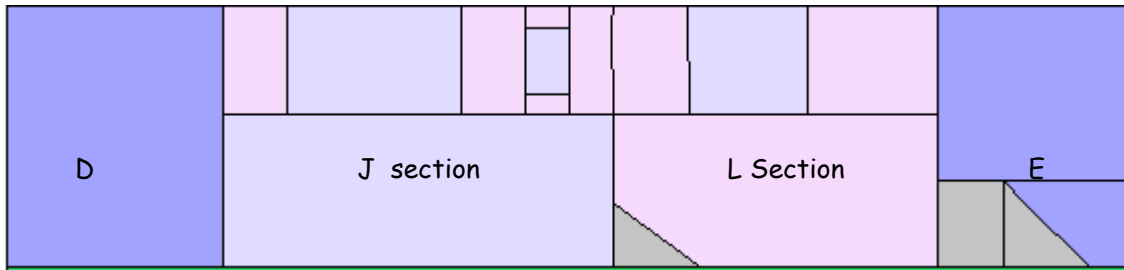
Sew the last connector corner to the left of Sky section F. Sew the stairs section P. You may want to draw the stairs in with a Pigma Pen. This piece should measure $2 \frac{3}{4}$ by $1 \frac{1}{2}$ inches.



Sew Sky section E above the stairs - are you going to have an iron railing on the stairs?

This piece will now measure $2\frac{3}{4}$ by $3\frac{1}{2}$ inches

Sew the Sky section D to the left, then the first set of windows, the right set of windows and the sky and stairs.



Now, you just need to sew the roof to the house, and the house to the front yard.

To get that gorgeous eave line, use $\frac{1}{4}$ inch finished bias, and just ease it into the curve.

You have plenty of space for some bushes, or a pathway, or almost anything you can think of.

Have fun! Once embellished. trim to size

2 inches

