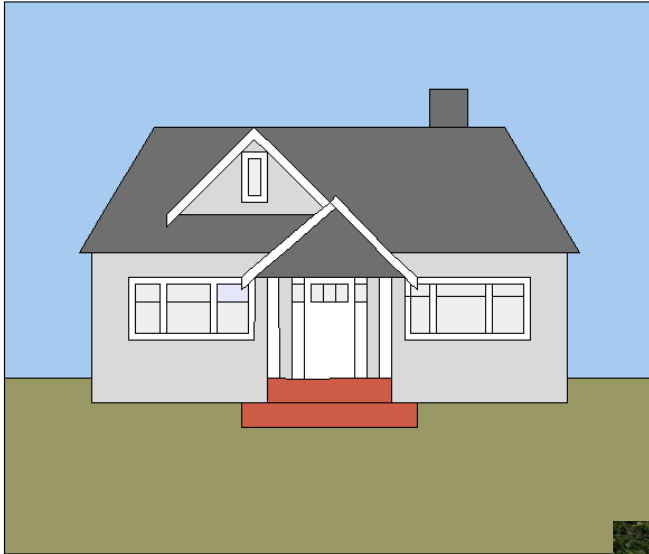


House #1

12 by 02 inches finished

12 ½ by 10 ½ inches unfinished



This is a pretty little house which is currently painted pale blue gray, with clean white trim and a dark grey roof --- however you can paint it any colour you like. We will do the basics for you, and you add the trim - you can colour, embroider, paint, applique - do just about anything you want with the house. It is on level ground, so you can plant a large garden in the front yard if you like. It's yours to play with!!



Sky:

- 1 - 9 by 3 inch (C)
- 1 - 1 ¼ by 2 ¼ inch (D)
- 1 - 4 ¼ by 3 inch (E)
- 2 - 2 ¼ by 3 inch (F)

Plus pieces for paper pieced sections A and B

Front Yard:

- 1 - 13 by 3 inch (G)
- 2 - 5 ¼ by 1 inch (H)
- 2 - 2 ¼ by 1 inch (I)

Steps:

- 1 - 4 by 1 inch (J)
- 1 - 3 by 1 inch (K)

Windows:

- 1 - 1 ½ by 1 ½ inch (L)
- 2 - 3 ¼ by 1 ¾ inch (M)

Door:

- 1 - 2 by 2 ½ inch (N)

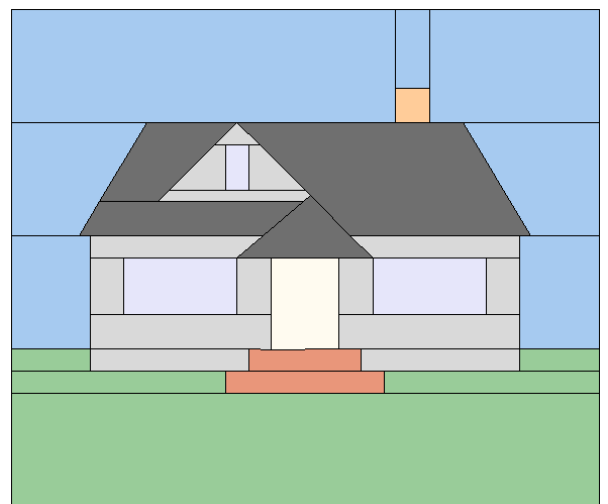
Chimney:

- 1 - 1 ¼ inch square (O)

Siding:

- 1 - 1 by 1 ¾ inch (P)
- 3 - 1 ¼ by 1 ¾ inch (Q)
- 2 - 4 ½ by 1 ¼ inch (R)
- 2 - 4 by 1 inch (S)

Plus pieces for paper pieced sections A and B

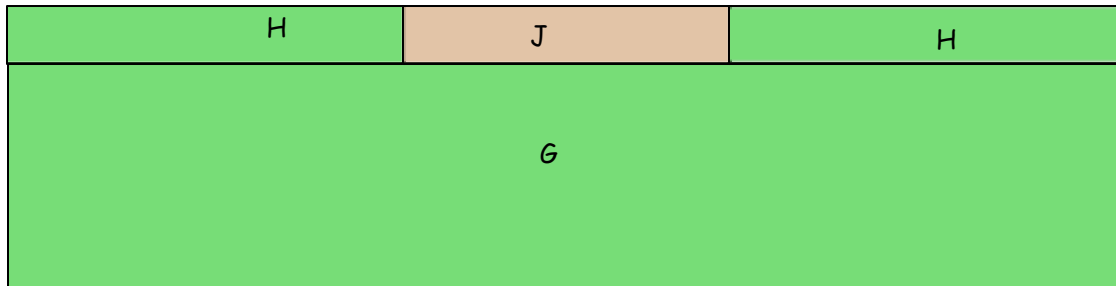


Roof - pieces for paper pieced sections A and B

We are going to work from the bottom up to construct our house - there are just a few interesting bits in this one -

The first strip is the front yard - set aside strip G. (you could put a path on it if you like - a way to get from the front to the stairs!)

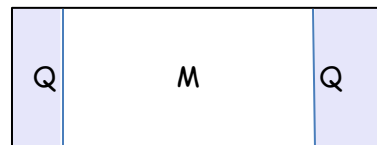
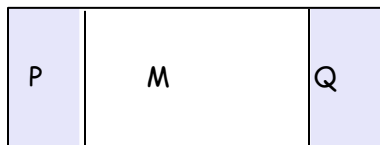
The second strip is the lower step - sew your H strips on either side of step J. Sew this to the top of the grass. This should measure $12 \frac{1}{2}$ by 3 inches.



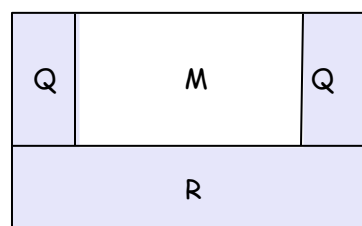
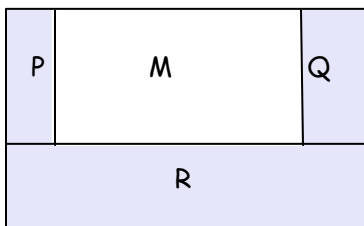
Next build the second step - add it to the front yard for a section $3 \frac{1}{2}$ inches tall.



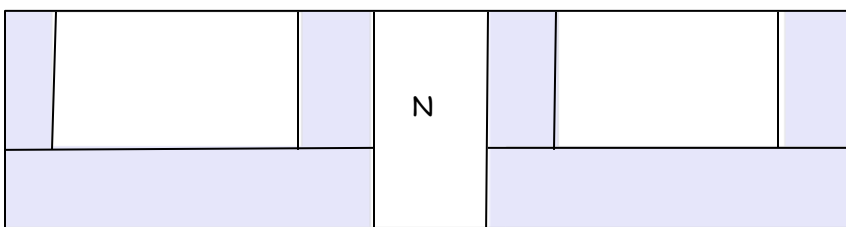
Now for the windows and doors. Sew the following strips for the windows:



Add the R rectangles to the bottom of the windows



To assemble this strip - add the door N to the centre of the strip.

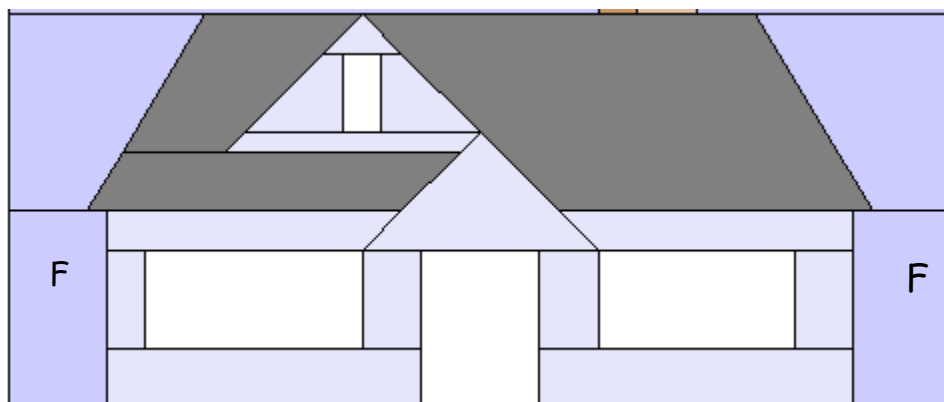


Set this aside for the moment - as we now need to form those triangular gables and the roof. The easiest way to accomplish this is to paper piece it.

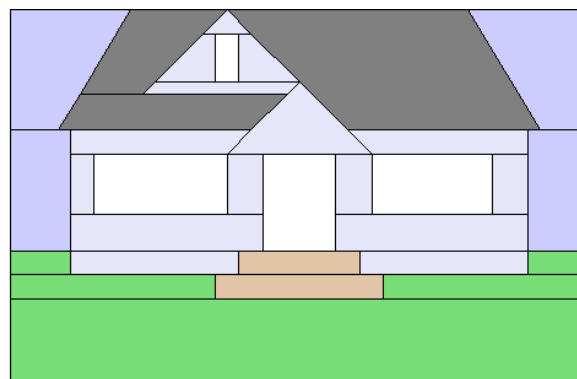
If you don't like paper piecing feel free to use templates, or triangular rulers to do the roof section. Whichever way you decide to create them, leave the seam between the wall siding and the roof open at the ends.

Sew the two sections of the roof together from Point A to B.

Gently move the roof out of the way, sew the F sky rectangles on the sides of the house. Finish those seams you left open in Sections A and B



Now, add this to our base!



Sew the chimney to sky section D, then sew this between Sky sections C and E.



Now add this to the top of the house, and you have a complete square.

Embellish it whatever way you wish - have lots of fun with it! You can use a marker for smaller details, and embroider, paint, dye or applique garden details and house details or even show us who lives in your house and what they are doing behind those windows!!