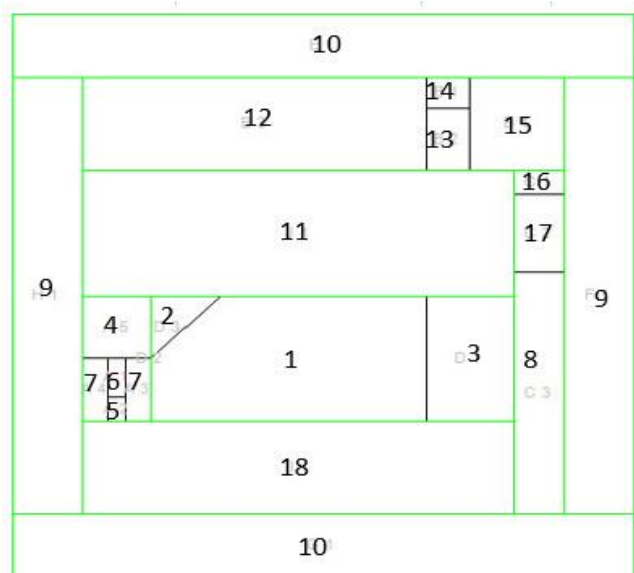
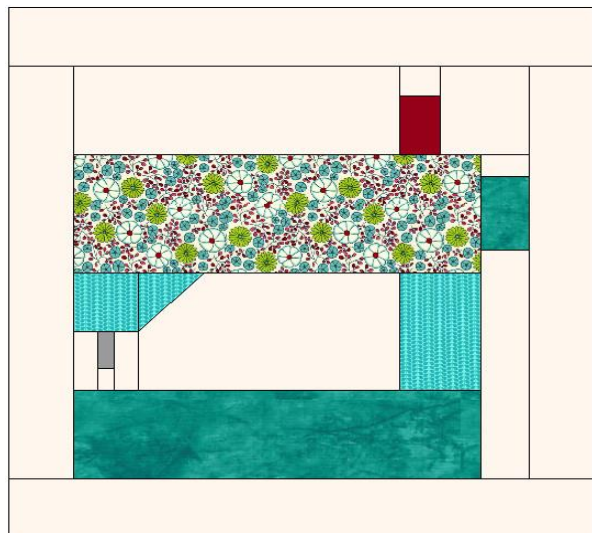


## Sewing Machine Block

Use a light background and any other colours you want.



<u>Fabric</u>	<u>For</u>	<u>#</u>	<u>Pieces</u>
Background	machine centre	1	1 - 4 1/2" x 2 1/2"
Your choice	machine centre	4 + 2	2 - 1 1/2" square
Your choice	machine centre	3	1 - 1 3/4" x 2 1/2"
Background	needle bar	5	1 - 3/4" x 7/8"
Grey	needle bar	6	1 - 3/4" x 1 1/4"
Background	needle bar	7	2 - 1" x 1 1/2"
Background	right of machine	8	1 - 1 1/4" x 4 1/2"
Your choice	machine top	11	1 - 6 3/4" x 2 1/2"
Background	left of thread	12	1 - 5 1/2" x 2"
Your choice	thread spool	13	1 - 1 1/2" x 1 1/4"
Background	thread spool	14	1 - 1 1/4" x 1"
Background	right of thread	15	1 - 2" square
Background	right of machine	16	1 - 1 1/4 x 1"
Your choice	flywheel	17	1 - 1 1/4" x 1 3/4"
Your choice	machine bottom	18	1 - 6 3/4" x 2"
Background	borders	9	2 - 1 1/2" x 7 1/2"
Background	borders	10	2 - 1 1/2" x 9 1/2"

### **Sewing Instructions:**

- Lay #2 right sides together on top left corner of #1 and sew diagonally as in picture. Fold to corner and trim fabric from behind. Sew #3 to right side of this unit.
- Sew #5 to #6 together and then #7's to either side of the #5&6 unit. Trim the needle bar unit to 1 1/2" square. Add #4 to the top of this unit and then add to the #1,2,3 unit as per picture.
- Sew #11 to the top of the machine centre unit and #18 to the bottom of it.
- Make the flywheel unit with #8, 16 & 17 and attach to right side of sewing machine.
- Join #13 & #14 together and add #12 to left side and #15 to right side. Then attach to main unit. Square to 7 1/2". Add border pieces #9 & #10 to complete. Will measure 9 1/2" square.