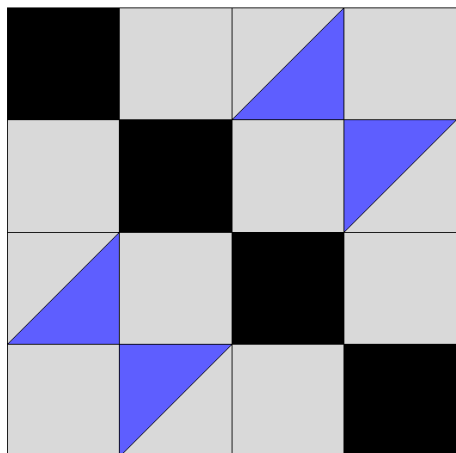


Road to Home

12 inches finished (12½ end to end)



This block has various names - but probably the most common is Road to California. There are innumerable road blocks - or Rocky Road blocks, each featuring stepping stones along the diagonal of the block. Then what you do on either side of the 'road' sometimes determines the name.

We have named ours Road to Home.

If you are making your quilt for the Quilts of Valour, you could substitute a pair of Maple Leaf blocks for the road blocks, and it would look great!

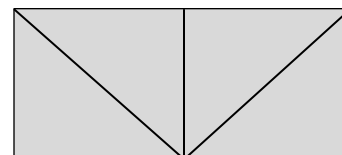
Light grey solid - 1 - 3½ inch by 15 inch strip
 4 - 3½ inch squares
 1 - 4 by 8 inch rectangle

Black Fabric - 1 - 3½ inch by 15 inch strip

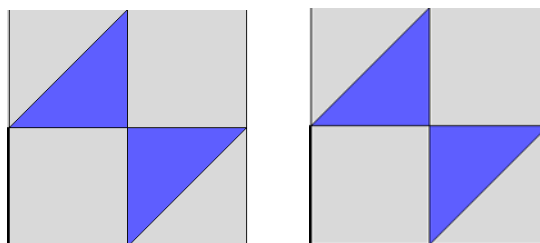
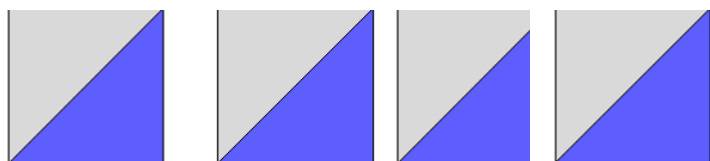
Blue fabric - 1 - 4 by 8 inch rectangles

This is a very simple block. We will start by making the four half-square triangle blocks.

Draw a line dividing the gray 4 by 8 inch rectangle in half lengthwise, then diagonally in the two halves forming a V shape:



Layer this rectangle with the Blue rectangle, and sew ¼ inch on either side of the diagonals. Cut on the all drawn lines to give you four blue/grey half square triangles. Trim the squares to 3½ inches.

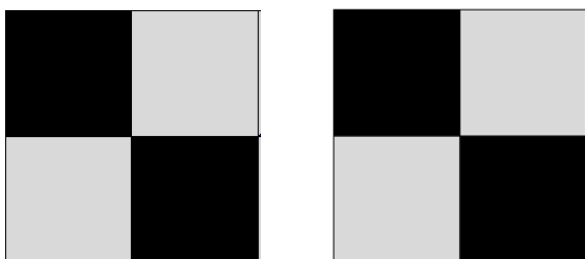


Using the gray squares with the half triangle squares, make two four patches:

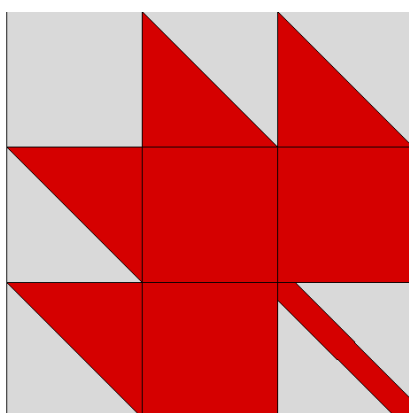
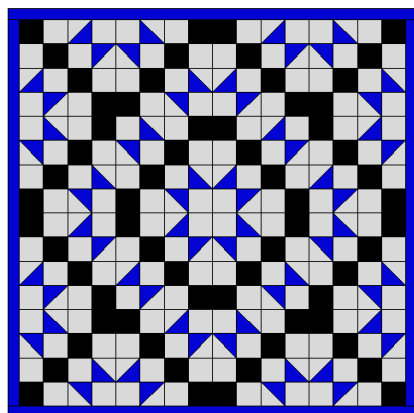
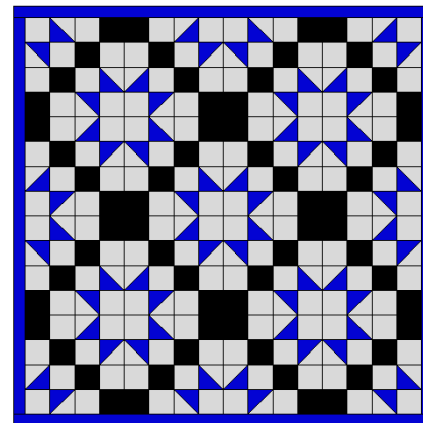
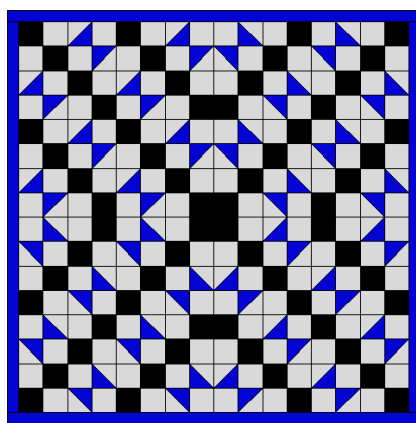
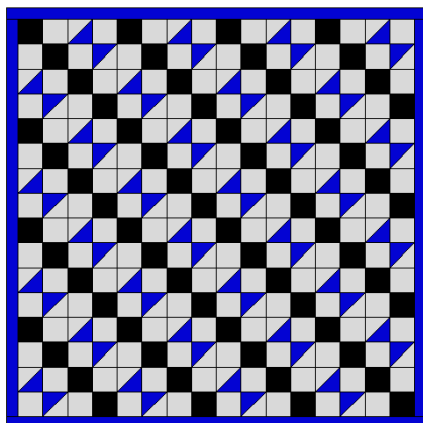
Now make the four patches by sewing the $3\frac{1}{2}$ by 15 inch strips of grey and black right sides together along one long edge:



Cross cut the strip into $3\frac{1}{2}$ inch sections, and sew two four 4-patches:



Lay out the four patches as shown in the diagram on the first page, and sew them together!



For a 12 inch maple leaf you will need four $4\frac{1}{2}$ inch half square triangles - and the rest $4\frac{1}{2}$ inch squares. For the stem, cut one $4\frac{1}{2}$ inch background square in half diagonally, and insert a 1 inch strip for the stem.