

Flying Goose

Make 2 matching blocks

Cutting instructions: (will make the 2 blocks)

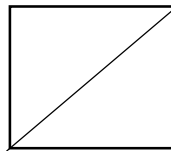
For Goose section pick 2 fabrics the same colour with one being lighter than the other. Stick to a medium tone fabric.

- 1 7" square of a lighter colour
- 3 7" squares of darker colour.

White Tone on Tone

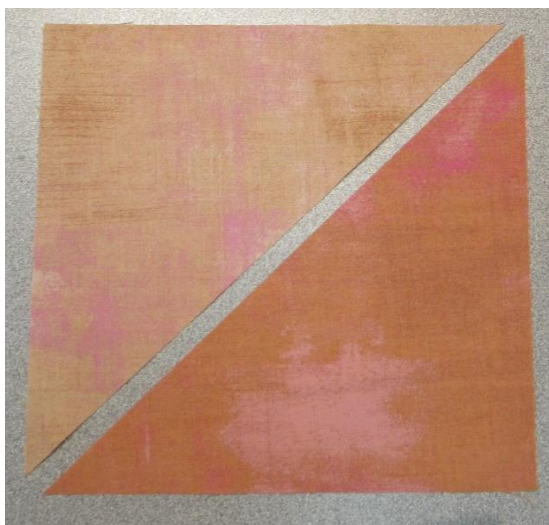
- 1 13" square

Cut all Squares diagonally once.

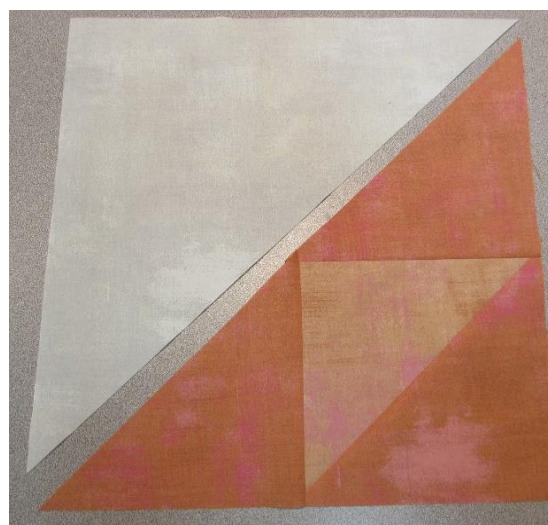


Construction of block:

Putting right sides together, sew your 1 light & 1 darker fabric together to create a half square triangle see 1A. Sew your other 2 darker fabrics to the sides of this unit as in picture 2A. Trim dog ears. Now sew the White tone on tone triangle to the goose unit as shown in picture 2A. Repeat to make 2 blocks.



1A



2A

Press & square up to 12 1/2".