

BMQG Spool Block February 2025 – Correction – 9” block unfinished



9” square unfinished

2 - 3 inch Black solid squares

2 - 3 inch white/white grunge or low volume squares

2 - 2.5 inch x 5 inch black rectangles

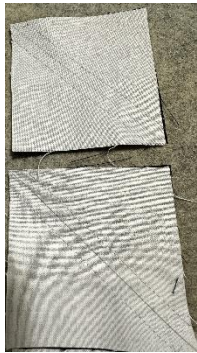
2 - 2.5 inch x 5 inch white/white grunge or low volume rectangles

1 - 5 inch square – your choice of colour – pattern preferred



Instructions:

1. Make the 4 half square triangles.



- a. Line up one Black and one other white/low volume 3 inch square. Draw a line from corner.
- b. Sew a quarter inch seam allowance on each side of the line you drew.
- c. Cut the triangles in half along the line.
- d. Press the half square triangles seam towards the colored side.
- e. Trim off the corners and square them up with a ruler. (Should be 2.5 inches square)



2. Starting with the top row, sew the squares and rectangles together. Repeat for all 3 rows.

- a. Press seams to alternate direction so that they can “nest” with the row below.
3. Sew the rows together, taking care to line up the squares.